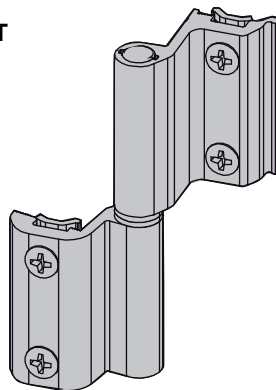
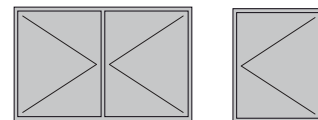
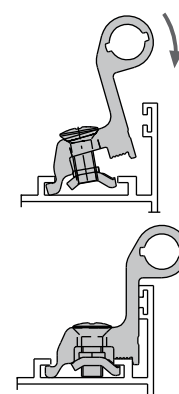
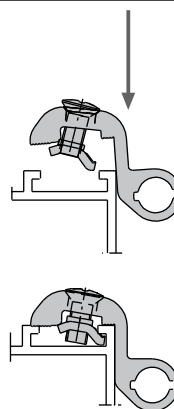
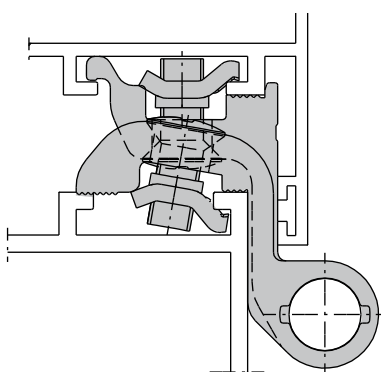
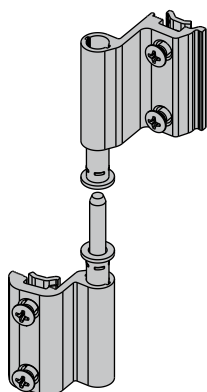


Art. 9730
Art. 9730T



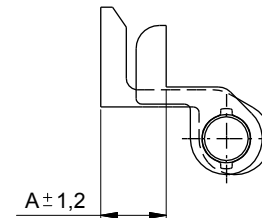
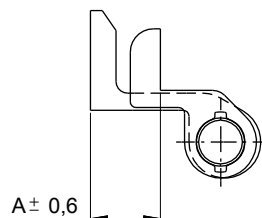
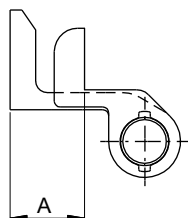
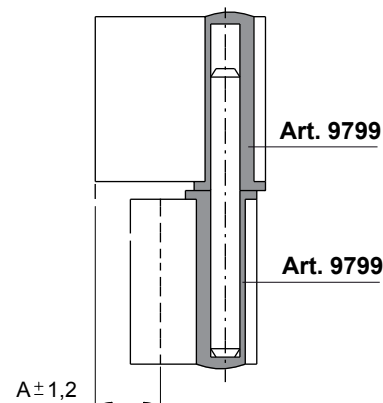
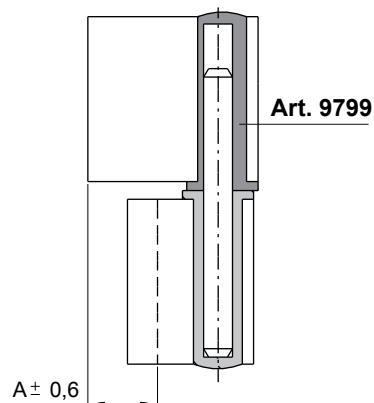
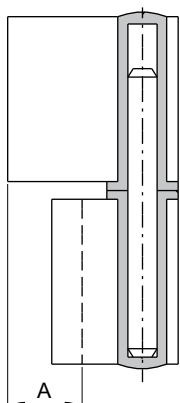
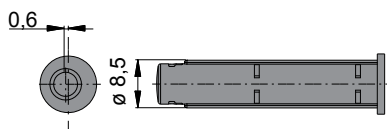
fapim[®]
Life in evolution

ULBD - Rev.00



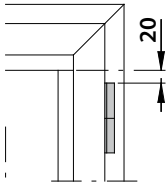
REGOLAZIONE L'eventuale regolazione si esegue sostituendo la boccia standard con la boccia eccentrica.
ADJUSTMENT Adjustment is made by replacing the standard bush with the eccentric one.
REGLAGE Le réglage se fait en substituant la douille standard par la douille excentrique
REGULACION La regulación se efectúa substituyendo el casquillo estándar con el casquillo excéntrico
DEFINIÇÃO A afinação e com a substituição da bucha estándar pela bucha excêntrica.
Die Verstellung erfolgt nach dem Austausch der Standard Buchse mit der Excentrische Buchse.
AFSTELLING De afstelling gebeurt door het vervangen van de standaard bus door de excentrische bus.
REGULACJA Dodatkowe regulacje wykonuje się zastępując tulejke standardowa tulejka centrująca
ΡΥΘΜΙΣΗ Η ρύθμιση γίνεται αντικαθιστώντας το υπάρχον πουκάμισο με το έκκεντρο
Регулировка одной эксцентриковой втулкой, взамен стандартных.
 Eventualno štelovanje se vrši nakon zamene standardne čaure ekscentričnom

Art. 9799

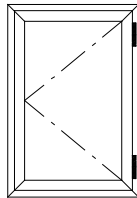




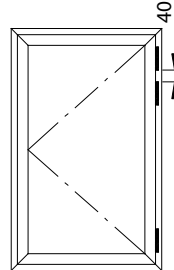
Limite d'impiego consigliato
 Recommended limit of use
 Limite d'emploi conseillée
 Limite de uso recomendado
 Limite de uso recomendado
 Geadviseerde gebruikslimiet
 Empfohlenen Gebrauchslimieten
 Zaleca się ograniczenie zużycia
 Συνιστώμενο όριο χρήσης
 Рекомендации по использованию
 Preporučene granice korišćenja



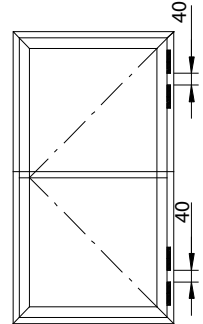
Posizionamento cerniera
 Hinge positioning
 Positionnement de la paumelle
 Posicionamiento de la bisagra
 Posicionamento da dobradiça
 Positionierung des Scharniers
 Positionering van het scharnier
 Ustawienie zawiasu
 Θέση του μεντεσέ
 Расстановка петель.
 Pozicioniranje šarke



n°2 cerniere
 N. 2 hinges
 N. 2 paumelles
 N. 2 bisagras
 N. 2 dobradiças
 2 Scharniere
 2 scharnieren
 n° 2 zawiasy
 N.2 μεντεσέδες
 2 петли
 2 šarke



n°3 cerniere
 N. 3 hinges
 N. 3 paumelles
 N.3 bisagras
 N° 3 dobradiças
 3 Scharniere
 3 scharnieren
 n° 3 zawiasy
 N.3 μεντεσέδες
 3 петли
 3 šarke



n°4 cerniere
 N. 4 hinges
 N. 4 paumelles
 N. 4 bisagras
 N. 4 dobradiças
 4 Scharniere
 4 scharnieren
 n° 4 zawiasy
 N.4 μεντεσέδες
 4 петли
 4 šarke

