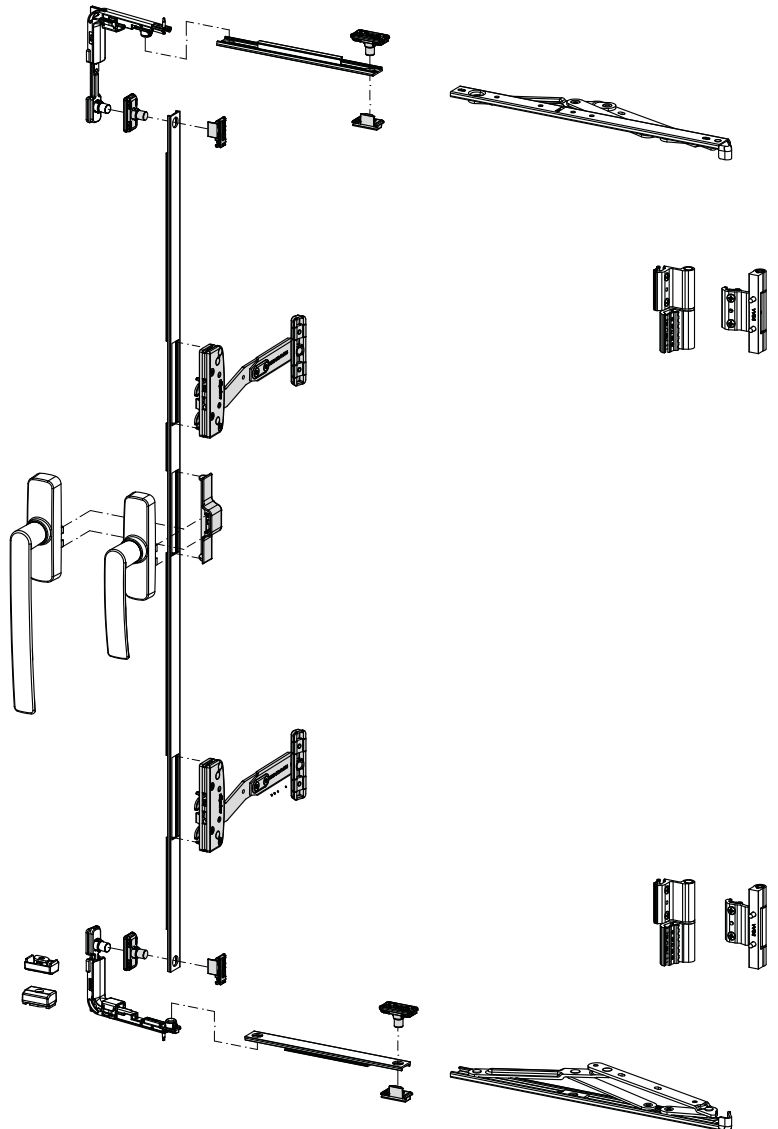
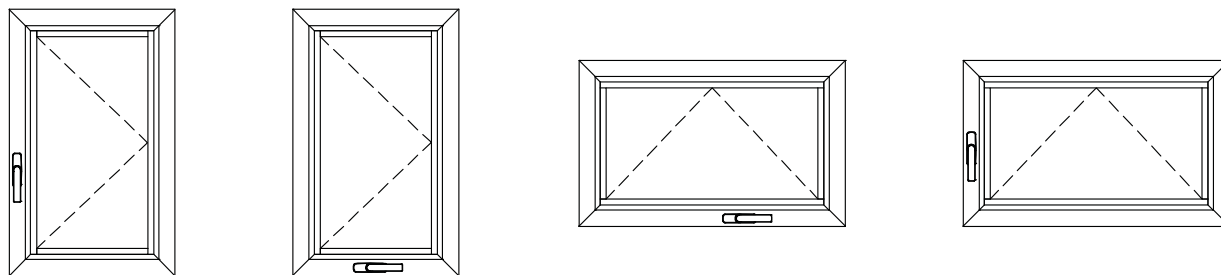


Articles	Code
	0530B
	1703
	1788
	1740
	1740A
	1740B
	1745
	1746
	1746B
	1789B
	1789C
	1790A
	1790B
	0534D





Il meccanismo OUT offre ampia libertà di posizionamento degli accessori all'interno della finestra, tuttavia, si consiglia di posizionare il meccanismo OUT più possibile centrato sul lato dove applicato, per ottenere un'apertura migliore. In caso di utilizzo di due meccanismi di apertura, si consiglia di posizionarli alle estremità della finestra, tale da limitarne lo svergolamento. Nel caso di utilizzo di bracci per finestre con apertura ad anta o a sporgere, l'eventuale sistema di frizione deve essere totalmente disabilitato. Istruzioni di montaggio dettagliate sul sito "www.fapim.it/out"

The OUT mechanism provides a wide choice as to window hardware positioning; nevertheless it is recommended that the OUT mechanism is placed as much centered as possible on the side where it is installed, in order to obtain a better opening. If two opening mechanisms are used, they should be placed at the window ends to limit any possible twisting. If side-hung or project-out opening arms are used, it is necessary to disable any clutch system. Detailed assembly instructions are available on "www.fapim.it/out"

Le mécanisme OUT donne un ample choix quant'au positionnement des accessoires sur la fenêtre; néanmoins il est recommandé que le mécanisme OUT soit positionné centré pour autant que possible sur le côté où il est installé, afin d'obtenir une meilleure ouverture. Si deux mécanismes d'ouverture sont utilisés, ils doivent être placés aux extrémités de la fenêtre pour en limiter toute torsion. En cas d'utilisation de compas pour ouvertures à la française ou à l'italienne, il est nécessaire de désactiver tout système d'embrayage. Instructions de montage détaillées sont disponibles sur "www.fapim.it/out"

El mecanismo OUT ofrece amplia libertad de posicionamiento de los accesorios al interior de la ventana; sin embargo se aconseja de posicionar el mecanismo centralmente sobre el lado donde se aplica, para obtener una mejor abertura. En caso de uso de dos mecanismos de abertura, se aconseja de posicionarlos a las extremidades de la ventana de forma tal de evitar el abarquillamiento. En caso de uso de compás para ventanas de abertura practicable o batiente, el eventual sistema de fricción tiene que estar deshabilitado. Instrucciones para el montaje detalladas: www.fapim.it/out

Для механизм OUT возможно свободное размещение фурнитуры на окне, тем не менее, мы рекомендуем разместить механизм OUT по центру створки для улучшения открывания. В случае использования двух механизмов открывания, мы рекомендуем располагать его на краю окна, таким образом мы ограничиваем поворот створки. Нельзя использовать фрикционные ножницы. Инструкция по монтажу на www.fapim.it/out.

OUT机械构造为在窗户的内部固定更大的配件, 提供了更大的空间; 因此建议将OUT机械 构造尽可能的安置在安装一侧的中心位置, 以便获得更大的开启空间。

如果使用两种开启机制, 建议将其定位在窗户的端部, 以限制任何可能发生的扭曲。

如果使用配有窗板或者突出窗开启臂的情况, 必须完全禁止使用任何离合器系统。

详细的安装说明可以在网站"www.fapim.it/out"查询下载

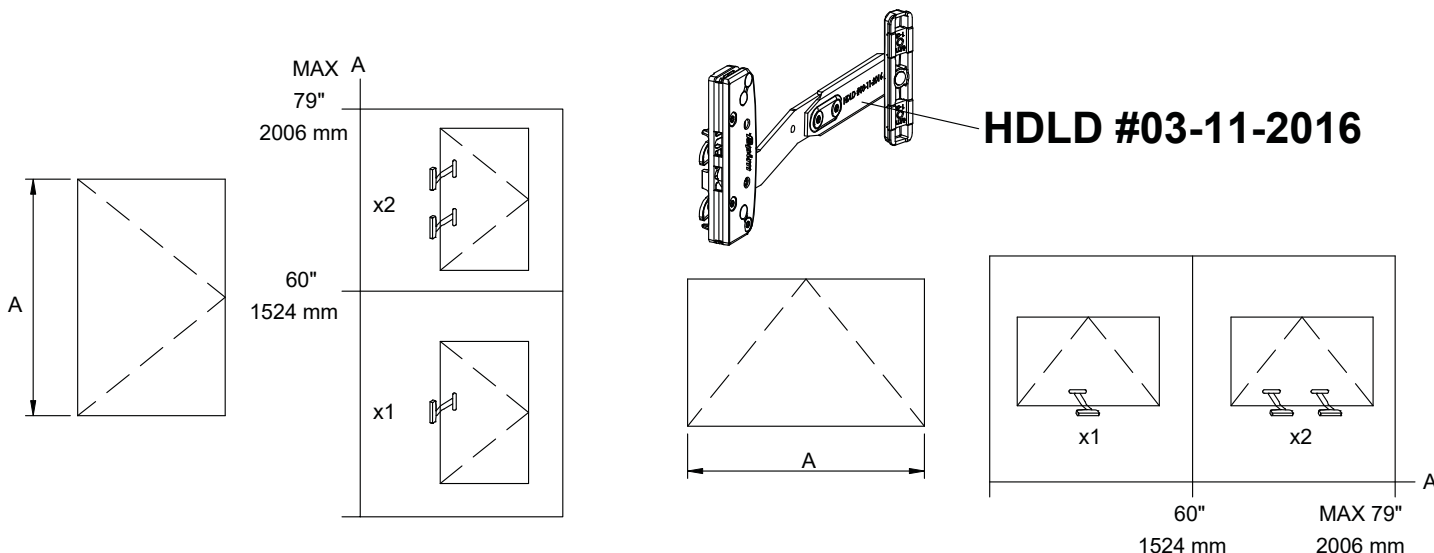
**APPLICAZIONE DEL DISPOSITIVO SU SERRAMENTI IN CONFORMITÀ AL REGOLAMENTO "WINDOW GUARD REGULATIONS OF THE CITY OF NY 6-30-91"(DOHMH)**

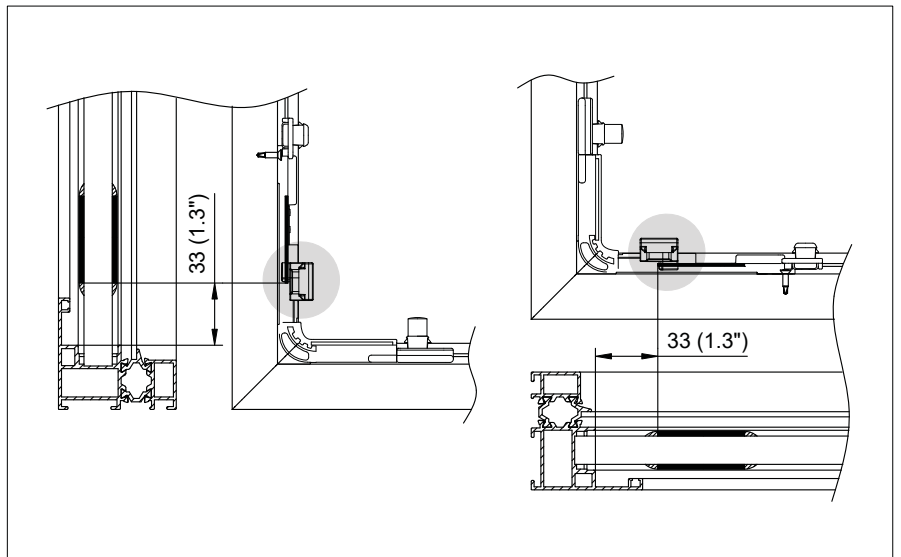
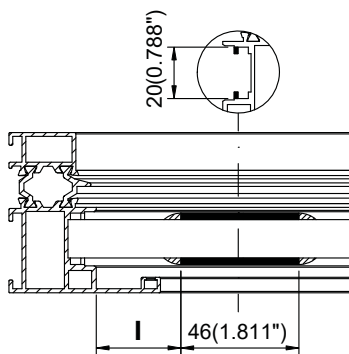
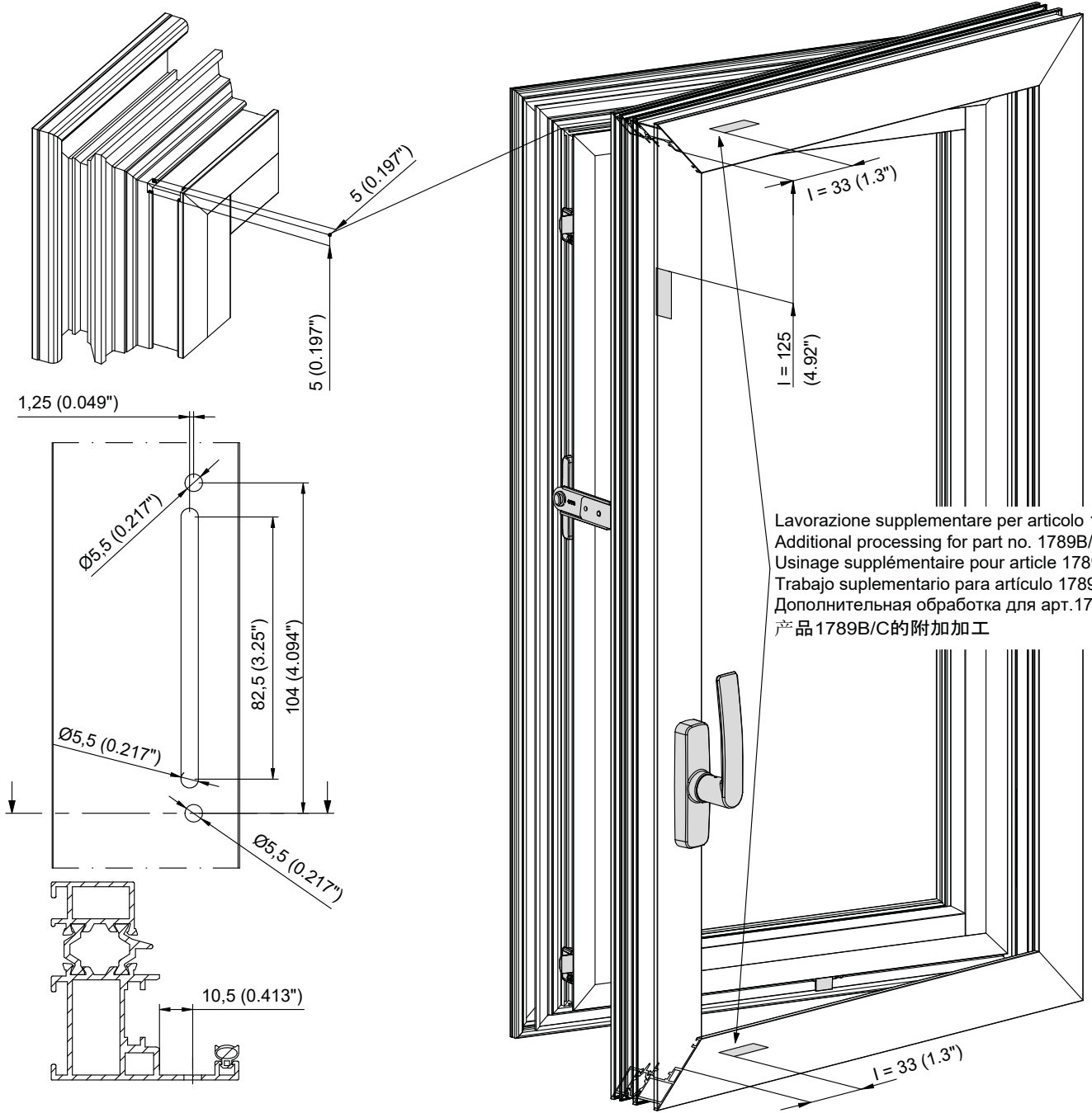
AVVISO: L'USO DI QUESTO DISPOSITIVO SU FINESTRE CON SPECIFICHE DIMENSIONALI OLTRE I MASSIMI DICHIARATI E' PERICOLOSO ED ILLEGALE! Il dispositivo deve essere installato solo su supporti solidi ed integri. Il meccanismo non deve essere applicato su finestre adibite a via di fuga in caso di incendio. E' obbligatorio l'impiego di due meccanismi di apertura OUT quando la lunghezza del lato dell'apertura limitata è superiore a 60" (1524 mm)

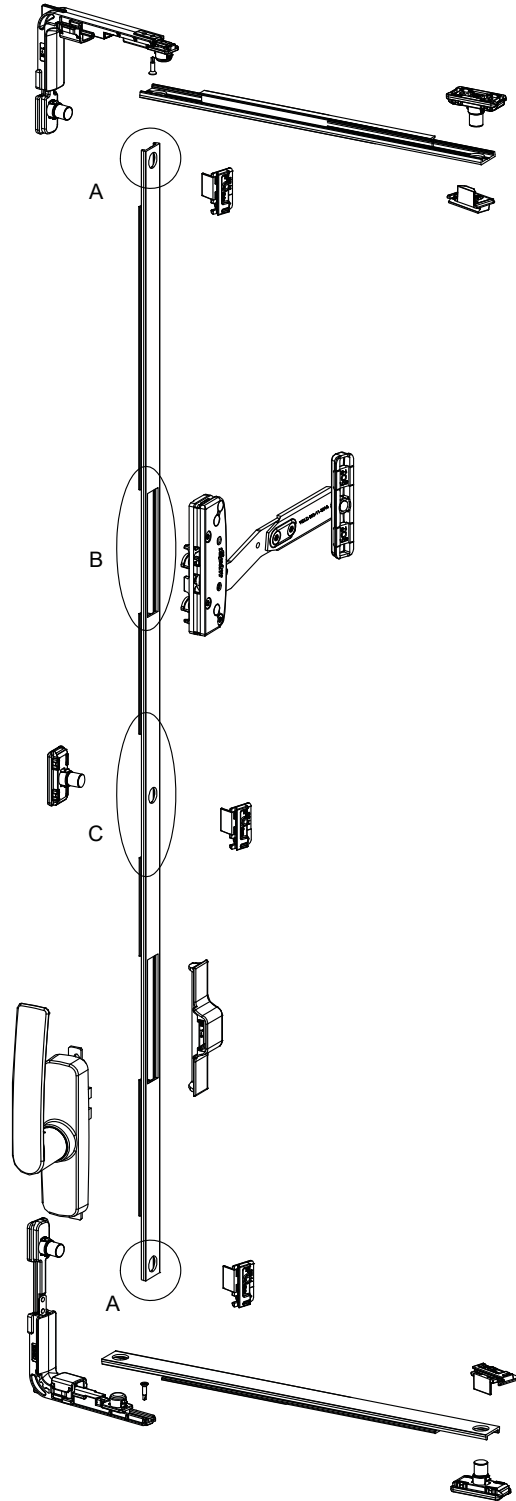
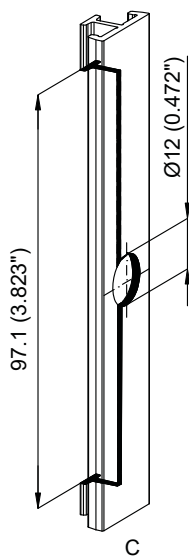
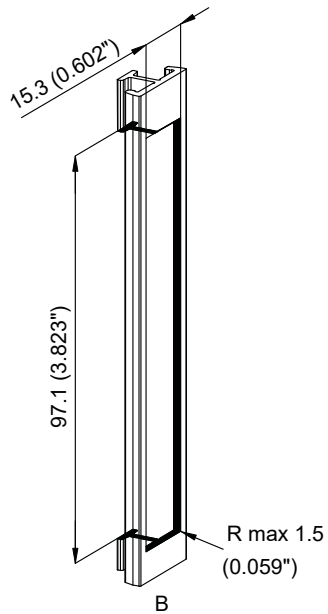
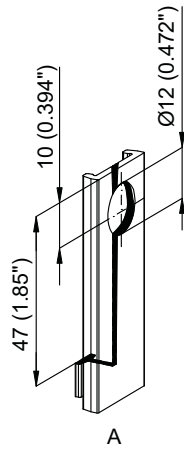
**APPLICATION OF THE DEVICE ON THE WINDOW ACCORDING TO "WINDOW GUARD REGULATIONS OF THE CITY OF NY 6-30-91" (DOHMH)**

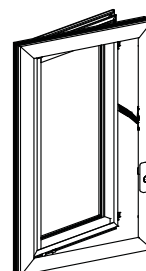
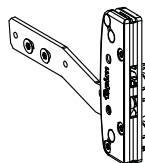
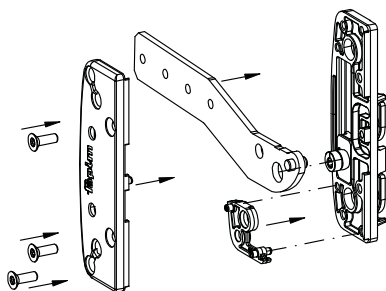
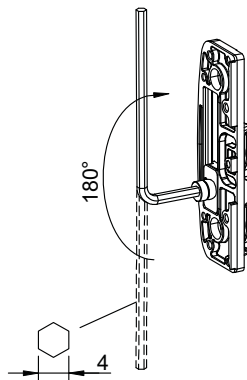
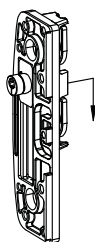
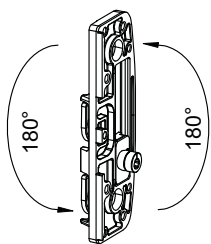
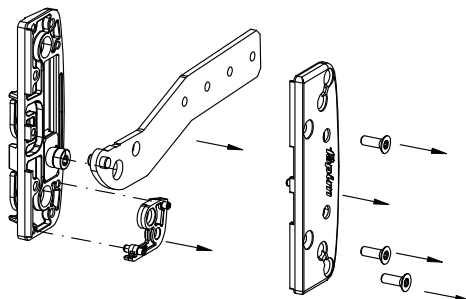
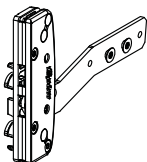
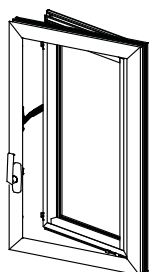
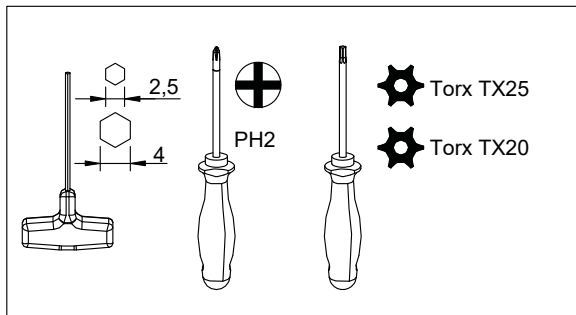
WARNING: THE USE OF THIS DEVICE ON WINDOWS EXCEEDING THE MAXIMUM ALLOWED DIMENSIONS IS DANGEROUS AND ILLEGAL!

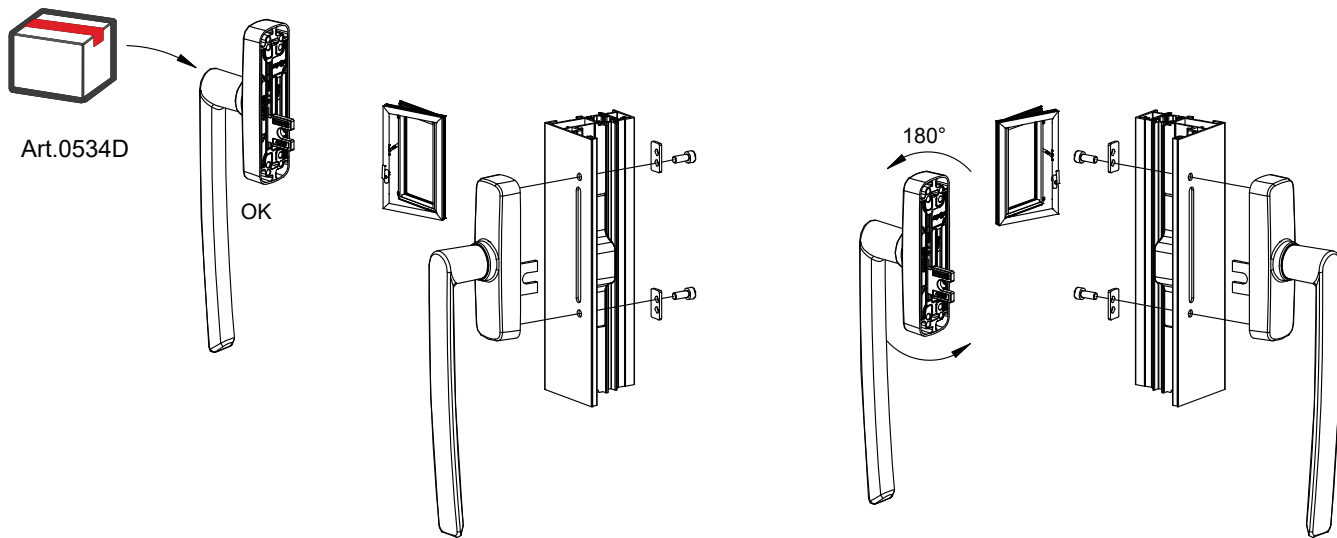
The device must be installed on strong and undamaged supports only. The mechanism should not be applied to windows used as an escape route in case of fire. The use of two OUT opening mechanisms is mandatory when the length of the limited opening side exceeds 60" (1524 mm).



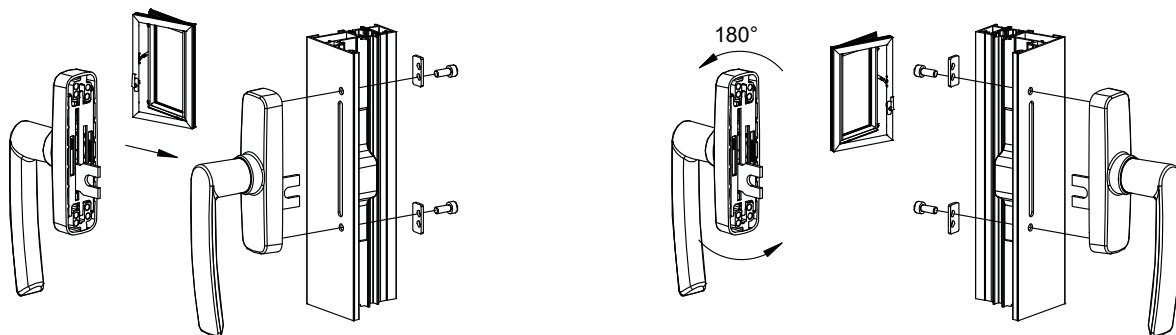
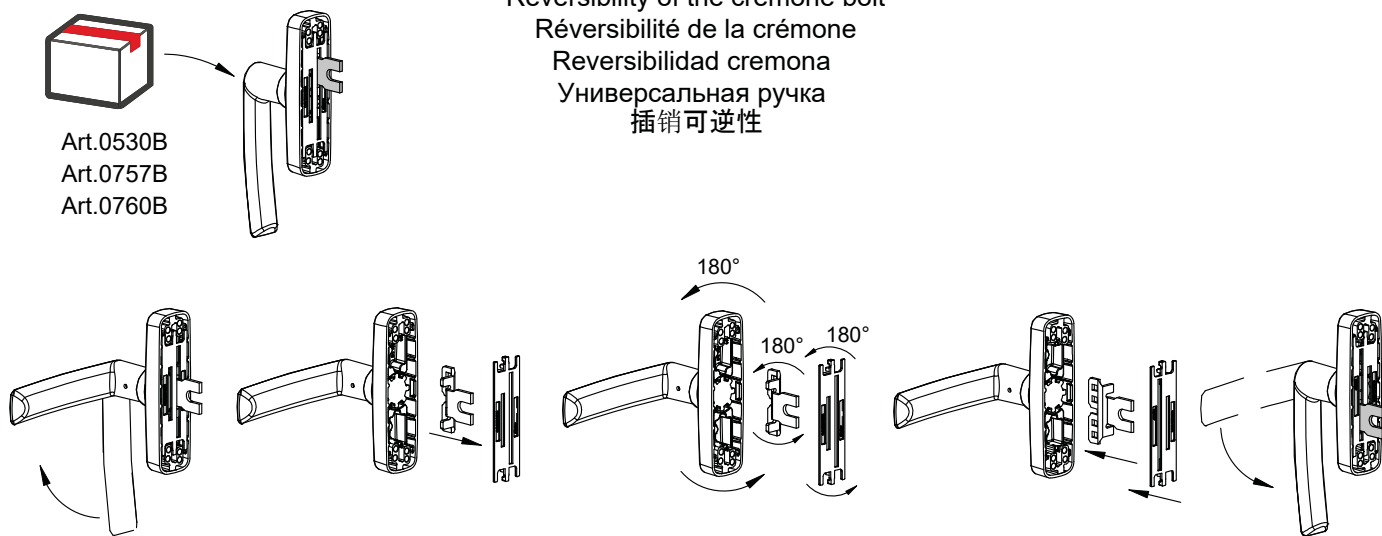


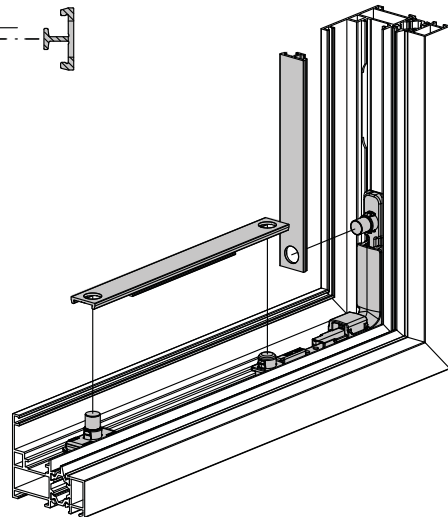
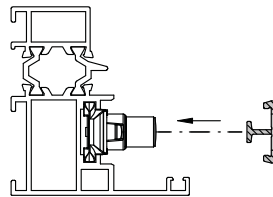
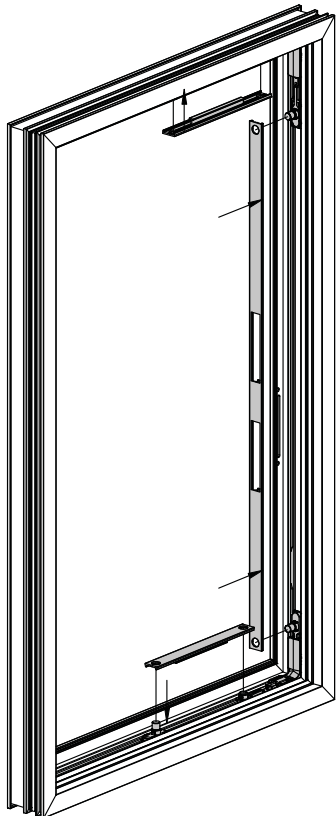
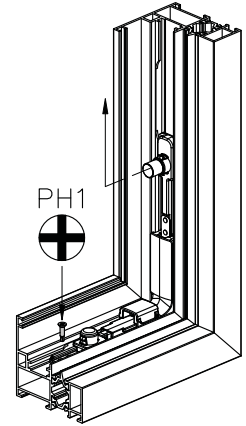
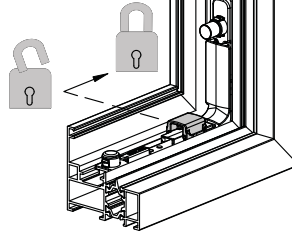
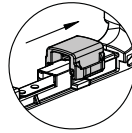
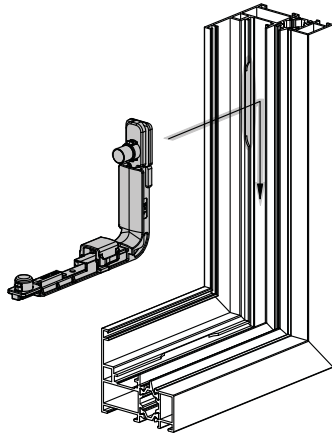
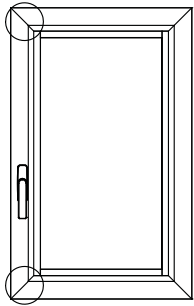
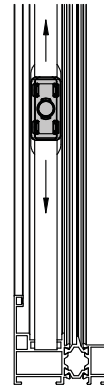
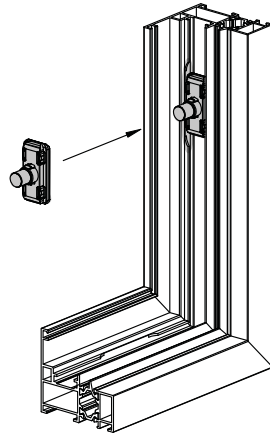
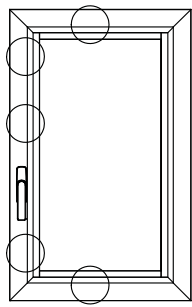


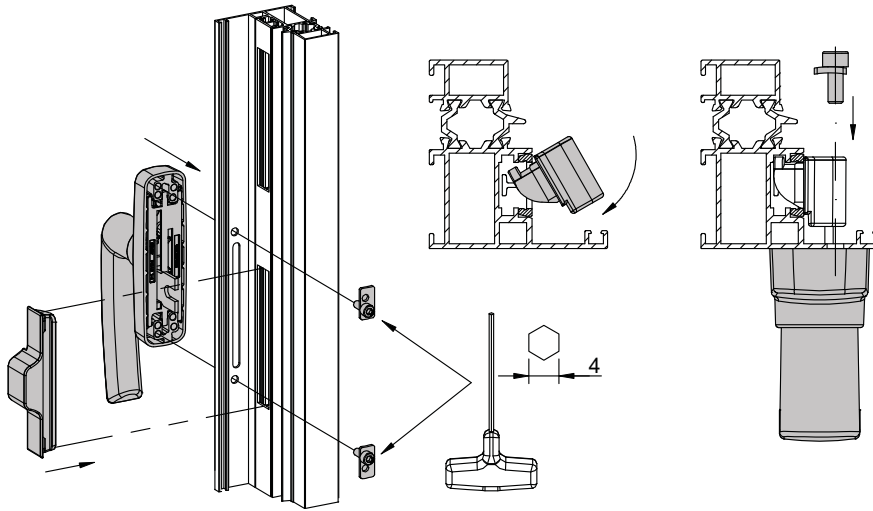




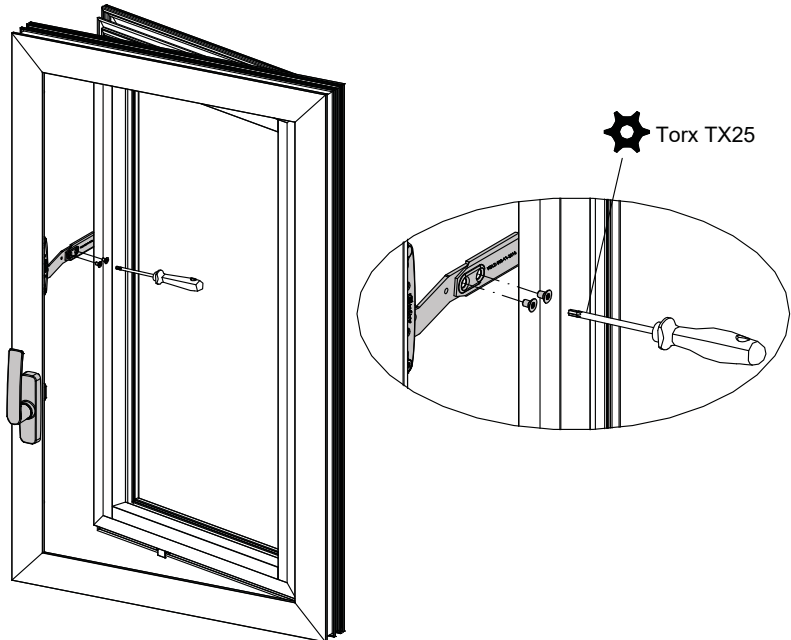
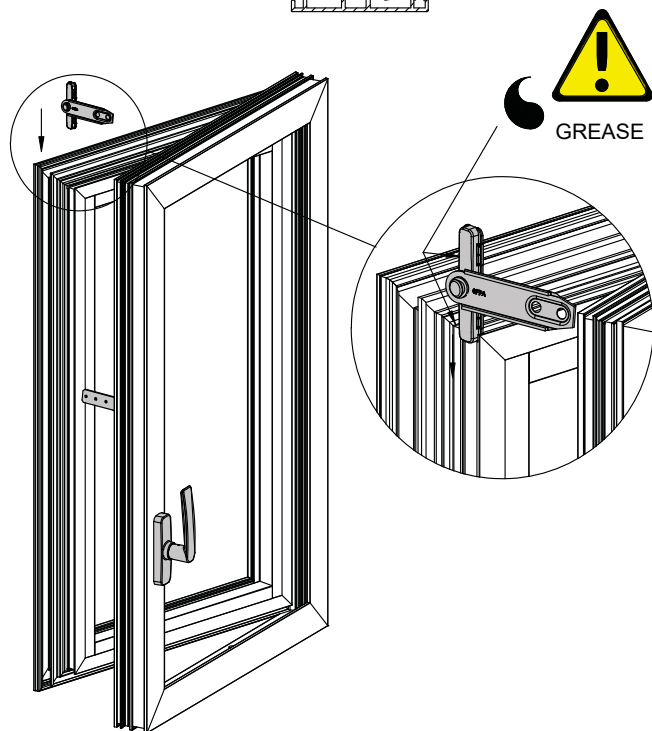
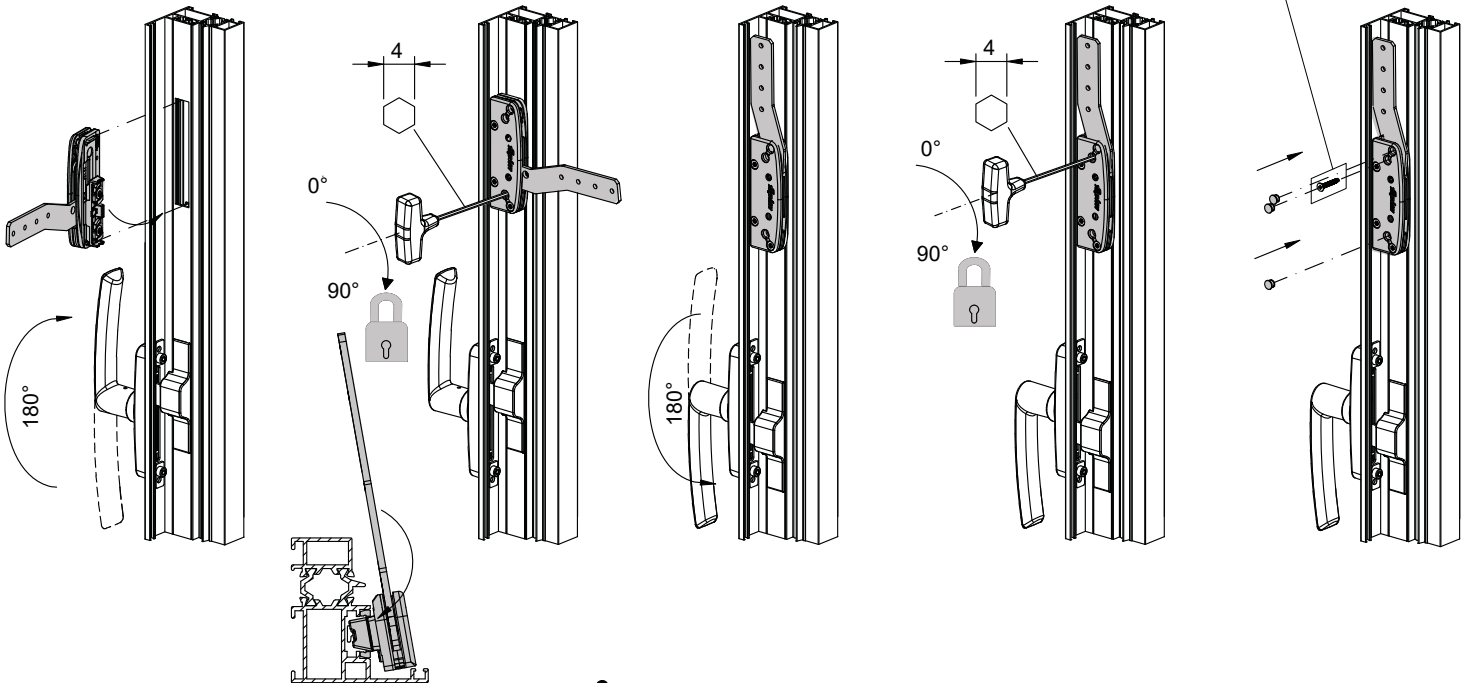

Reversibilit  cremonese  
Reversibility of the cremone bolt  
R versibilit  de la cr mone  
Reversibilidad cremona  
 ниверсальная ручка  
插销可逆性



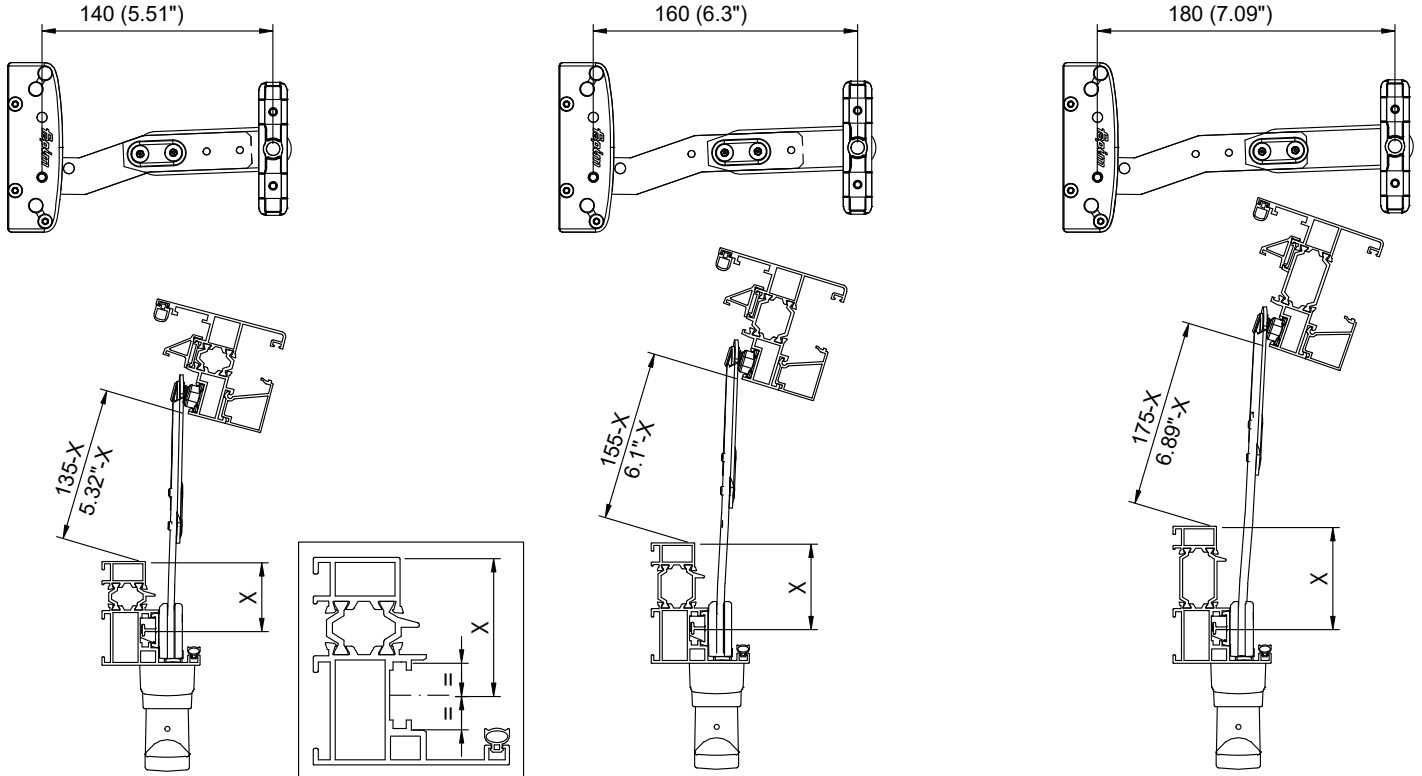




Optional screw  
TSP 2.9x19mm  
UNI8119 DIN7504-P







Posizionamento punti di chiusura e manutenzione  
Positioning of the locking points and maintenance  
Positionnement des points de fermeture et entretien  
Colocación puntos de cierres y manutención  
Позиционирование точки запираения и её регулировка  
闭合点定位和维护

Lubrificare ogni anno nei punti indicati con grasso Multis Complex EP2 o altro equivalente che abbia una temperatura d'impiego adeguata alle condizioni di utilizzo.

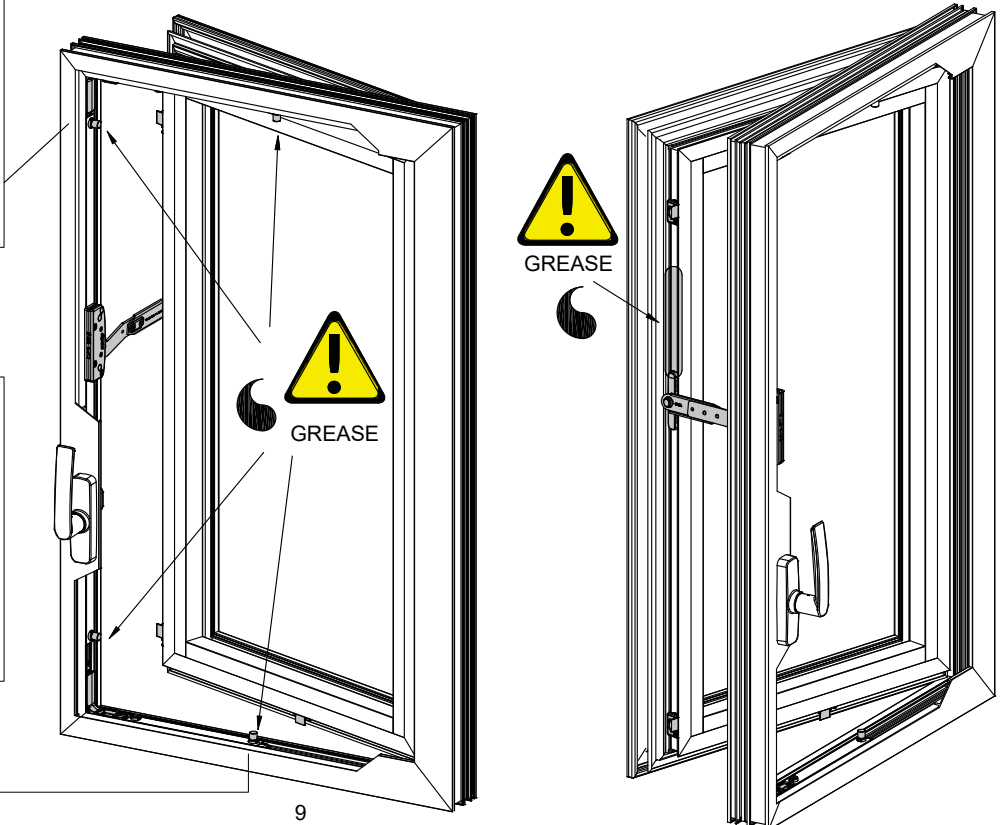
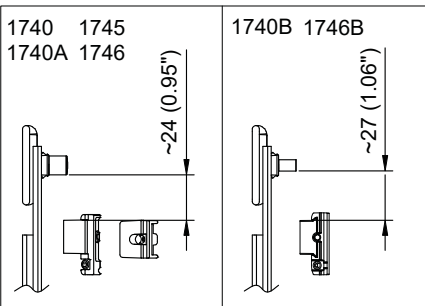
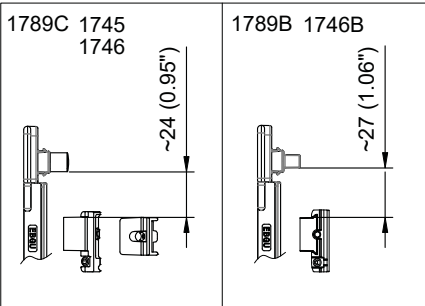
Lubricate every year the points indicated with Multis Complex EP2 or equivalent, having an operating temperature suitable to the conditions of use.

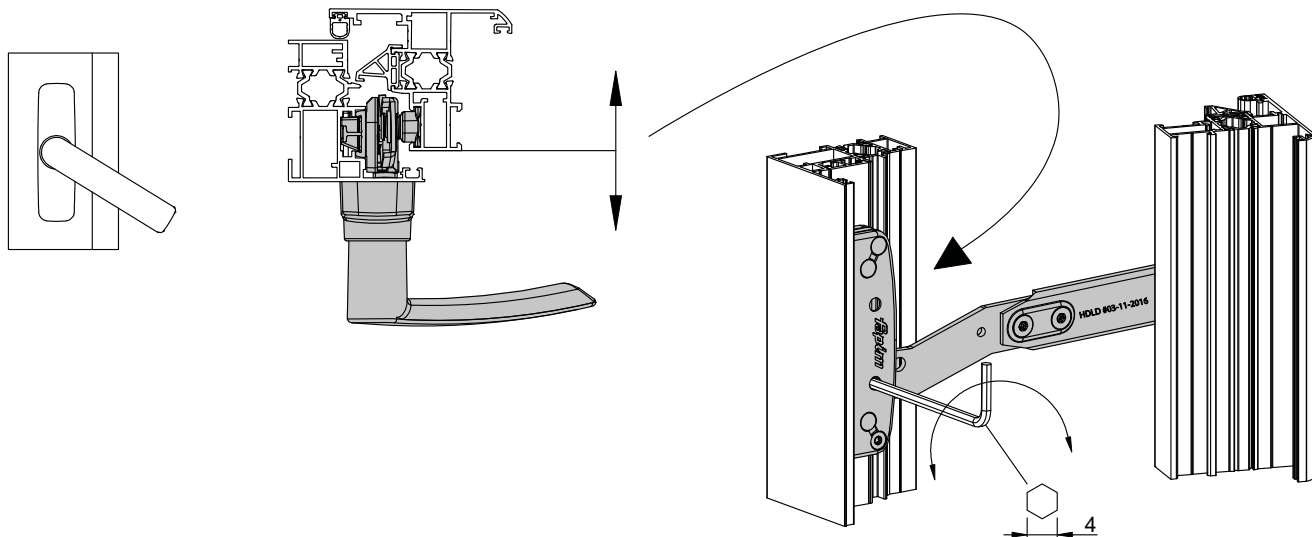
Graisser toutes les années les points indiqués avec Multis Complex EP2 ou équivalent, ayant une température de fonctionnement adaptée aux conditions de fonctionnement.

Lubricar cada año, los puntos indicados con grasa Multis Complecs EP2 o algo parecido, que tenga una temperatura adecuada a las condicione de uso.

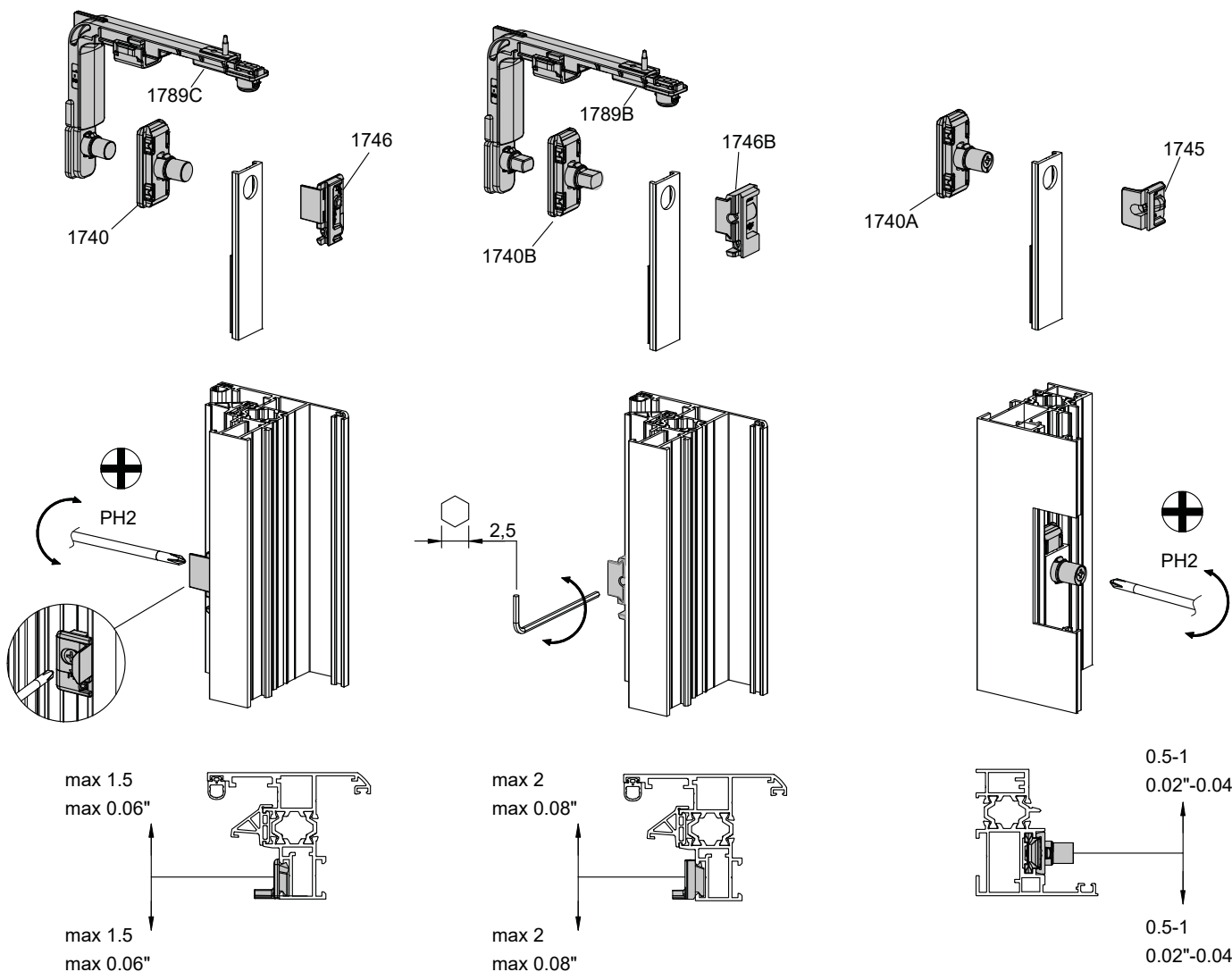
Смазывать ежегодно в указанных точках консистентной смазкой Multis Complex EP2 или другой аналогичной смазкой, которая имеет подходящую рабочую температуру и соответствует условиям использования.

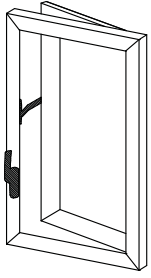
在适合的使用操作温度条件下，每年使用复合润滑剂EP2或类似产品润滑指定位置。



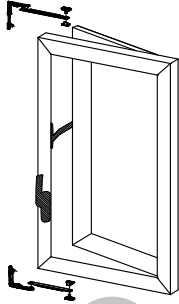


Regolazione pressione sulle guarnizioni  
 Adjusting of the pressure on the gaskets  
 Réglage de la pression sur les joints  
 Regulación presión de las guarniciones  
 Регулировка прижима  
 调节密封圈的压力

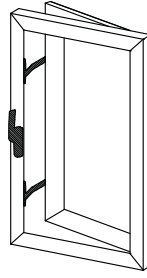




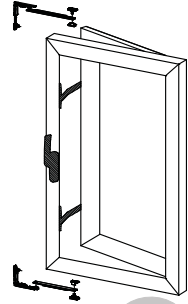
1  
pag. 12



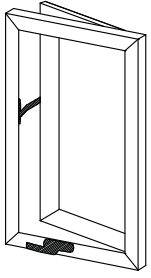
2  
pag. 13



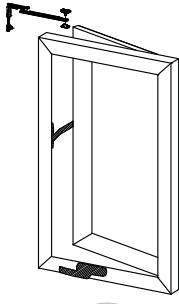
3  
pag. 14



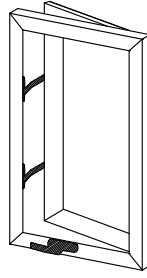
4  
pag. 15



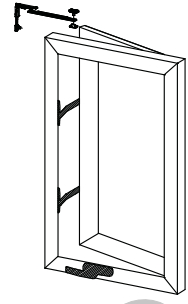
5  
pag. 16



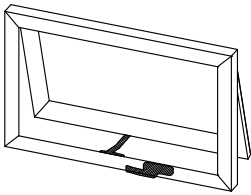
6  
pag. 17



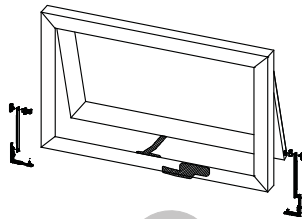
7  
pag. 18



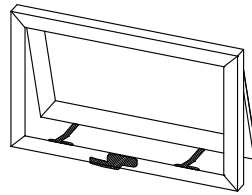
8  
pag. 19



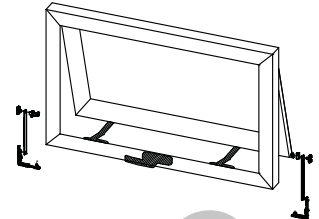
9  
pag. 20



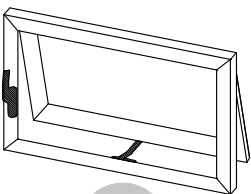
10  
pag. 21



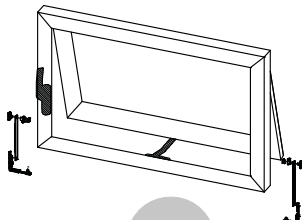
11  
pag. 22



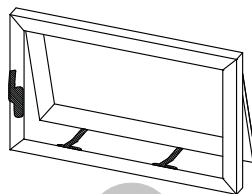
12  
pag. 23



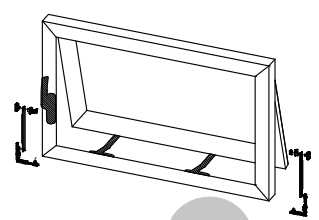
13  
pag. 24



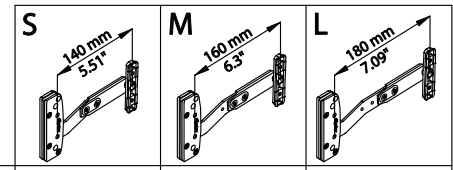
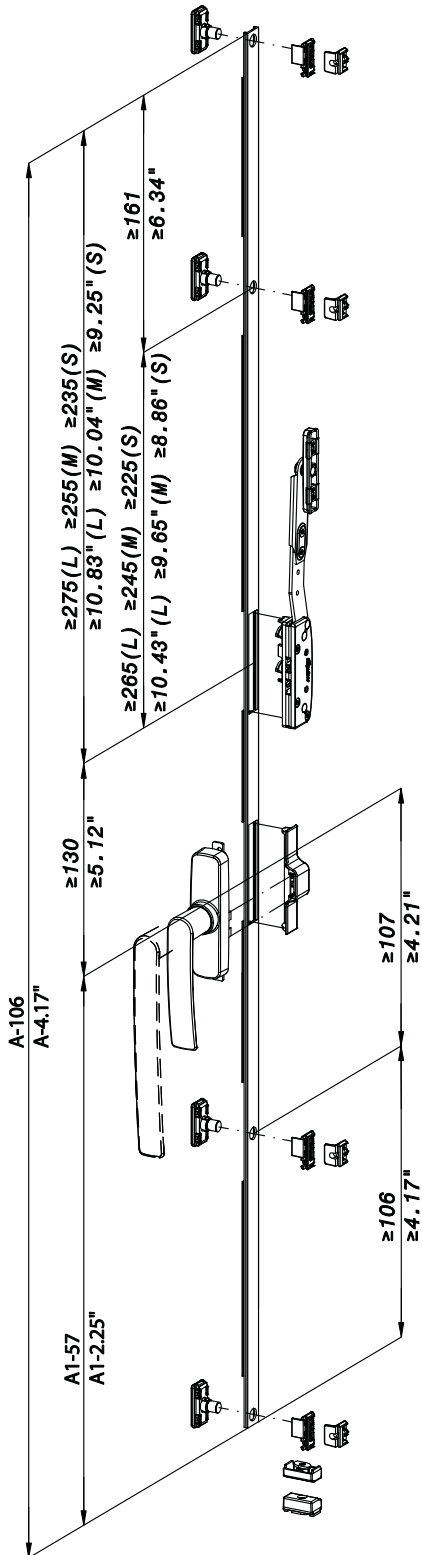
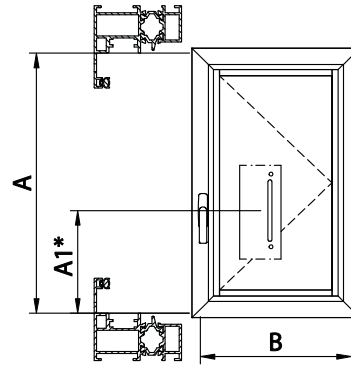
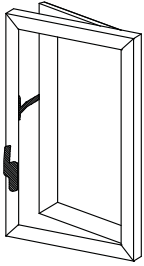
14  
pag. 25



15  
pag. 26



16  
pag. 27

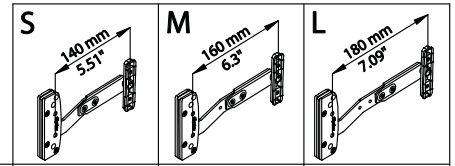
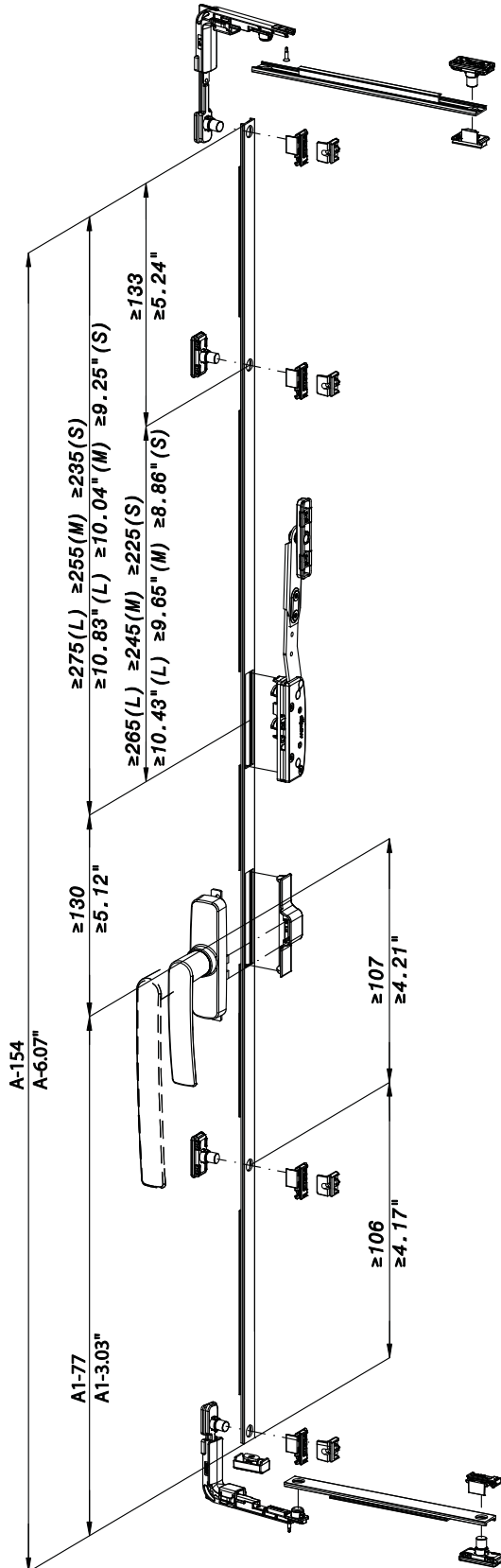
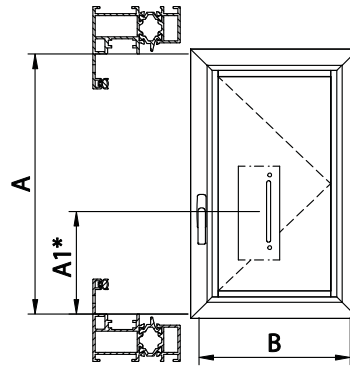
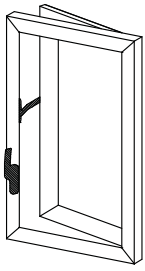


	A(mm) A(in)	≥577 ≥22.72"	≥597 ≥23.5"	≥617 ≥24.29"
	A1(mm) A1(in)	≥163 ≥6.42"		
	A(mm) A(in)	≥628 ≥24.73"	≥748 ≥29.45"	≥768 ≥30.24"
	A1(mm) A1(in)	≥163 ≥6.42"		
	A(mm) A(in)	≥684 ≥26.93"	≥704 ≥27.72"	≥724 ≥28.51"
	A1(mm) A1(in)	≥270 ≥10.63"		
	A(mm) A(in)	≥835 ≥32.88"	≥855 33.67"	≥875 ≥34.45"
	A1(mm) A1(in)	≥270 ≥10.63"		

 <b>9712</b>	B(mm) B(in)	≥350 ≥13.8"	≥500 ≥19.7"	≥650 ≥25.6"
-----------------	----------------	----------------	----------------	----------------

	B(mm) B(in)	Verificare la dimensione minima del braccio impiegato Check the minimum size of the arm used Vérifier la dimension minimum du compas utilisé Averiguar la medida mínima del compas usado Проверка минимального размера для использования механизма 检查用臂的最小尺寸		
--	----------------	---	--	--

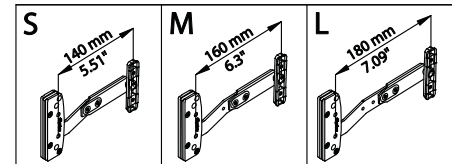
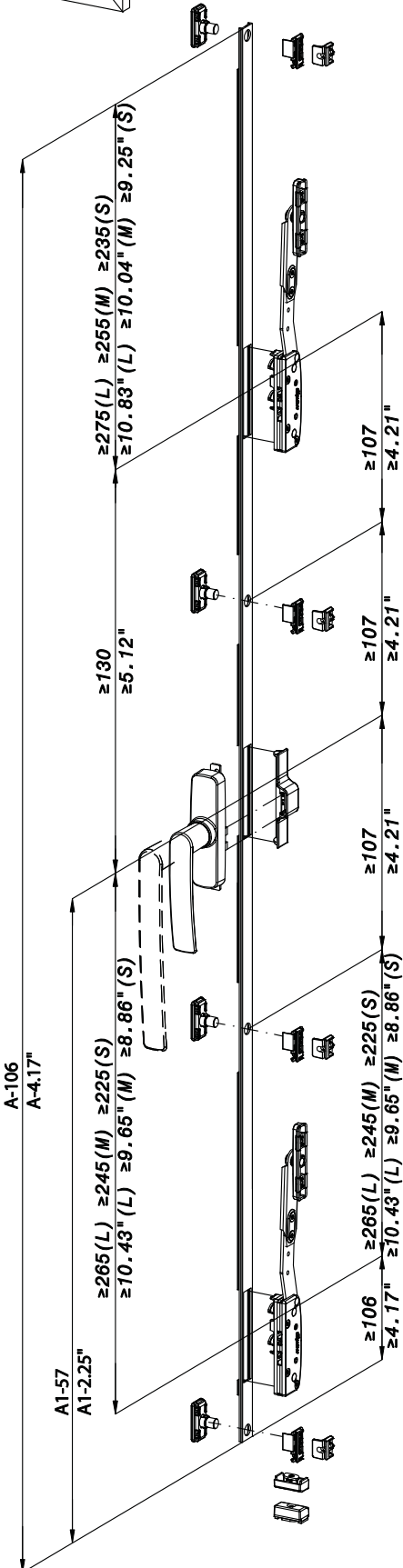
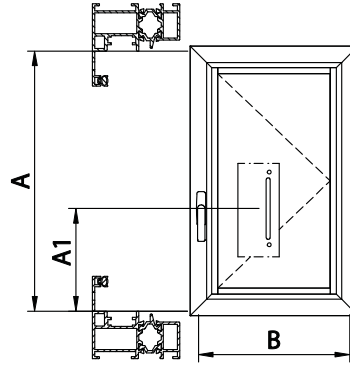
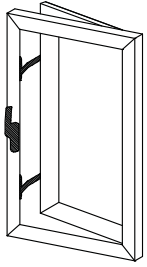
\*: Se A1 <207mm(A1<10.63") verificare compatibilità con cremone 0534D  
 If A1 <207mm(A1<10.63") check compatibility with 0534D cremone bolt  
 Si A1 <207mm(A1<10.63") vérifier la compatibilité avec la crémonne 0534D  
 Se A1 <207mm(A1<10.63") Averiguar compatibilidad con cremona 0534D  
 Если A1 <207mm(A1<10.63") проверить совместимость с ручкой арт. 0534D  
 如果A1 <207mm(A1<10.63") 检查与长插销0534D的兼容性



	<b>A(mm)</b> <b>A(in)</b>	≥625 ≥24.61"	≥645 ≥25.4"	≥665 ≥26.18"
	<b>A1(mm)</b> <b>A1(in)</b>	≥183 ≥7.21"		
	<b>A(mm)</b> <b>A(in)</b>	≥748 ≥29.45"	≥768 ≥30.24"	≥788 ≥31.03"
	<b>A1(mm)</b> <b>A1(in)</b>	≥183 ≥7.21"		
	<b>A(mm)</b> <b>A(in)</b>	≥732 ≥28.82"	≥752 ≥29.61"	≥772 ≥30.4"
	<b>A1(mm)</b> <b>A1(in)</b>	≥290 ≥11.42"		
	<b>A(mm)</b> <b>A(in)</b>	≥855 ≥33.67"	≥875 ≥34.45"	≥895 ≥35.24"
	<b>A1(mm)</b> <b>A1(in)</b>	≥290 ≥11.42"		

<p>9712</p>	<b>B(mm)</b> <b>B(in)</b>	≥350 ≥13.8"	≥500 ≥19.7"	≥650 ≥25.6"
	<b>B(mm)</b> <b>B(in)</b>	Verificare la dimensione minima del braccio impiegato Check the minimum size of the arm used Vérifier la dimension minimum du compas utilisé Averiguar la medida mínima del compas usado Проверка минимального размера для использования механизма 检查用臂的最小尺寸		

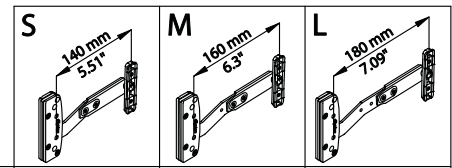
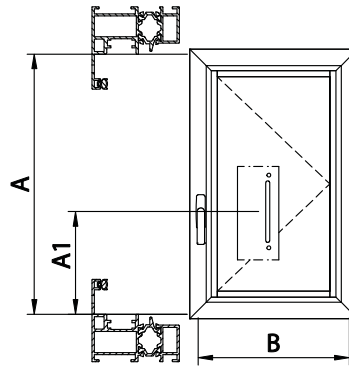
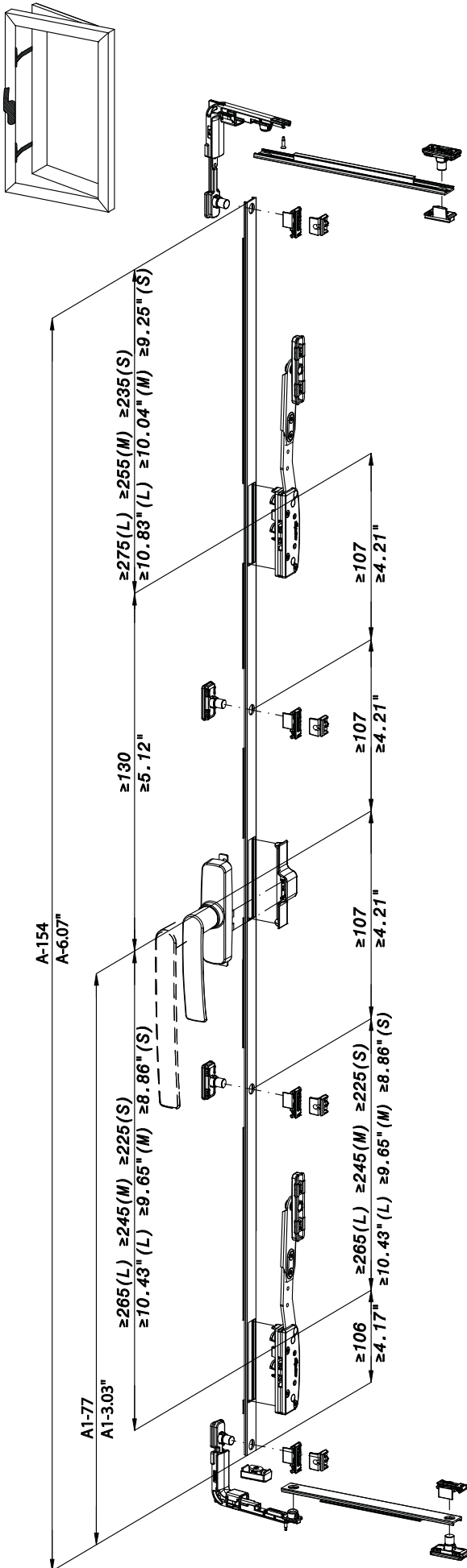
\* Se A1 <207mm(A1<10.63") verificare compatibilità con cremone 0534D  
 If A1 <207mm(A1<10.63") check compatibility with 0534D cremone bolt  
 Si A1 <207mm(A1<10.63") vérifier la compatibilité avec la crémonne 0534D  
 Se A1 <207mm(A1<10.63") Averiguar compatibilidad con cremona 0534D  
 Если A1 <207mm(A1<10.63") проверить совместимость с ручкой арт. 0534D  
 如果A1 <207mm(A1<10.63"), 检查与长插销0534D的兼容性



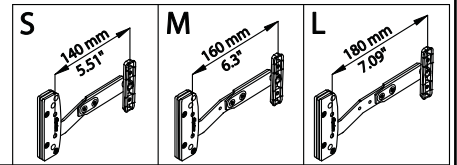
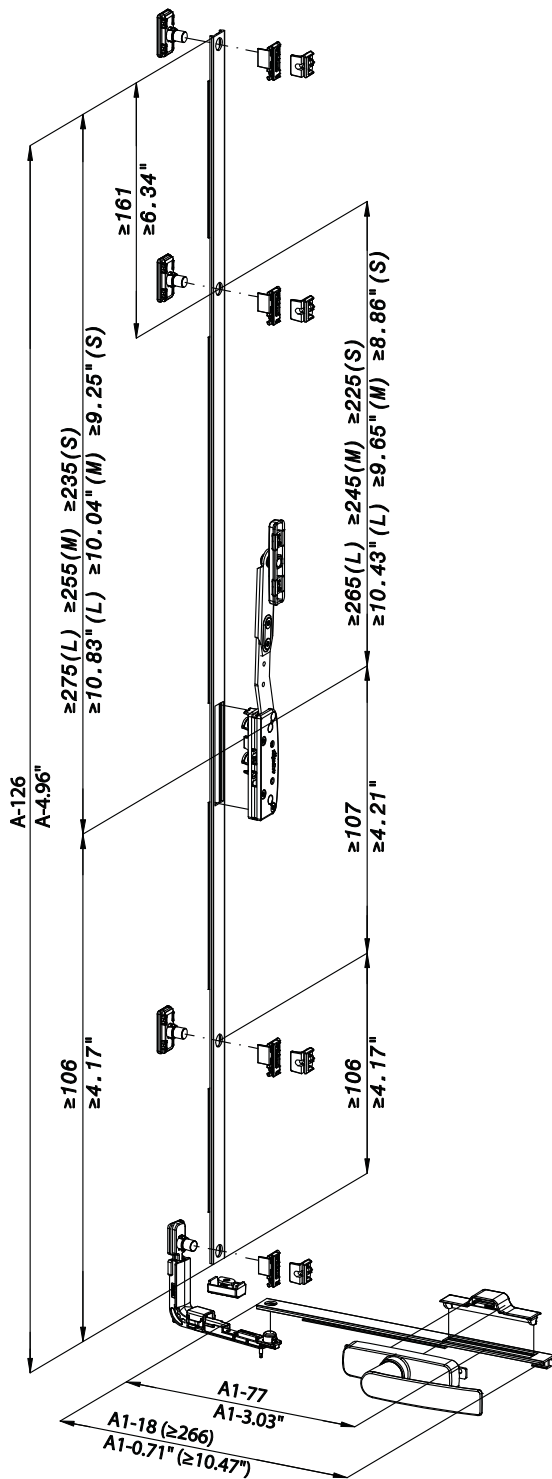
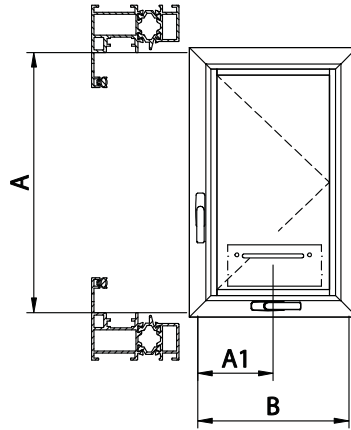
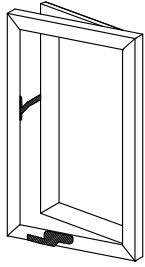
	A(mm) A(in)	≥802 ≥31.58"	≥842 ≥33.15"	≥882 ≥34.73"
	A1(mm) A1(in)	≥388 ≥15.26"	≥408 ≥16.07"	≥428 ≥16.85"
	A(mm) A(in)	≥886 ≥34.89"	≥926 ≥36.46"	≥966 ≥38.04"
	A1(mm) A1(in)	≥388 ≥15.26"	≥408 ≥16.07"	≥428 ≥16.85"
	A(mm) A(in)	≥909 ≥35.79"	≥949 ≥37.37"	≥989 ≥38.94"
	A1(mm) A1(in)	≥495 ≥19.49"	≥515 ≥20.28"	≥535 ≥21.07"
	A(mm) A(in)	≥993 ≥39.1"	≥1033 ≥40.67"	≥1073 ≥42.25"
	A1(mm) A1(in)	≥495 ≥19.49"	≥515 ≥20.28"	≥535 ≥21.07"

	B(mm) B(in)	≥350 ≥13.8"	≥500 ≥19.7"	≥650 ≥25.6"
--	----------------	----------------	----------------	----------------

	B(mm) B(in)	Verificare la dimensione minima del braccio impiegato Check the minimum size of the arm used Vérifier la dimension minimum du compas utilisé Averiguar la medida mínima del compas usado Проверка минимального размера для использования механизма 检查用臂的最小尺寸		
--	----------------	---	--	--



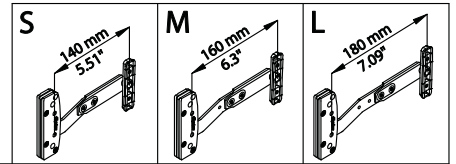
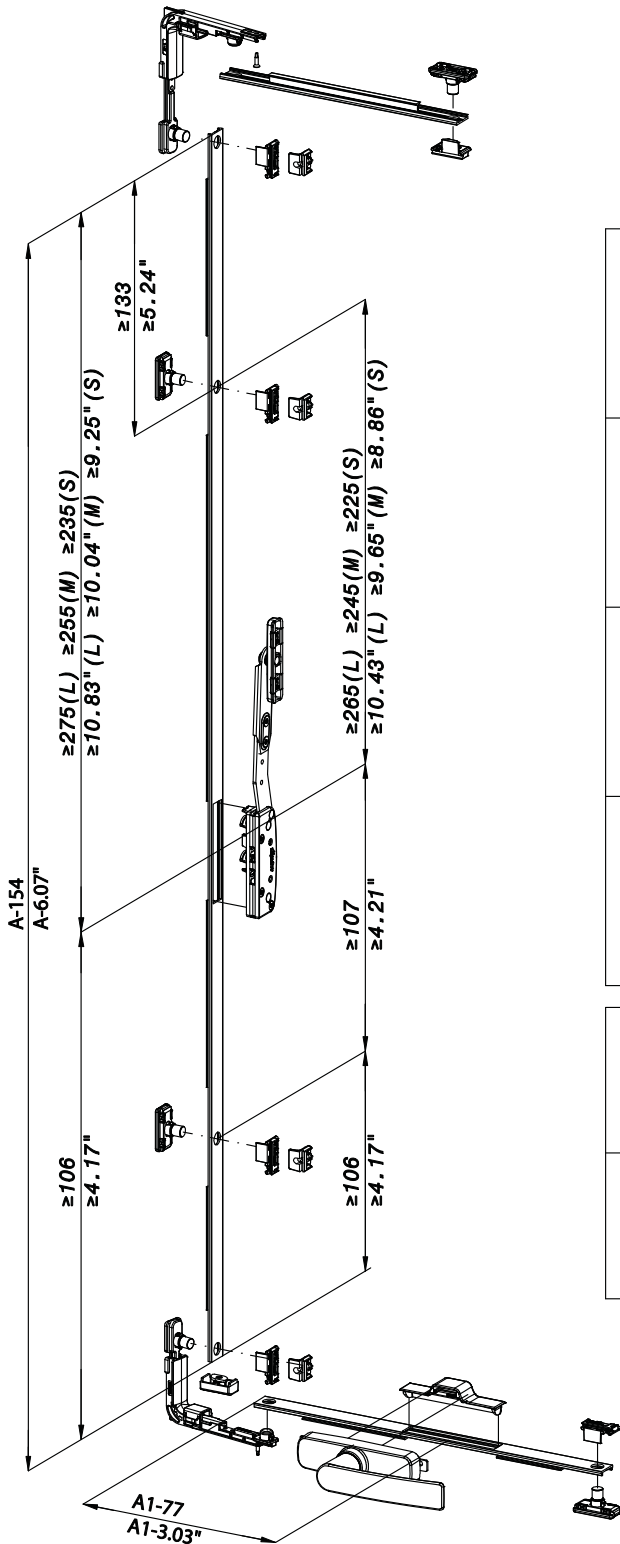
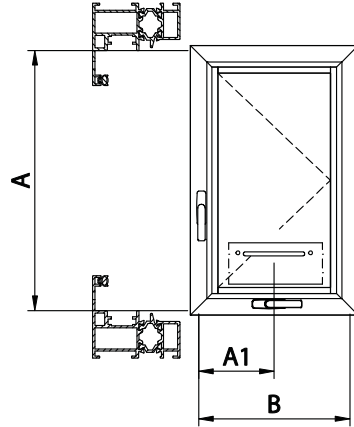
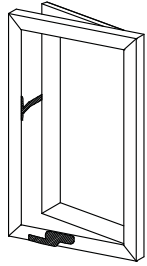
	A(mm) A(in)	≥850 ≥33.45"	≥890 ≥35.04"	≥930 ≥36.15"
	A1(mm) A1(in)	≥408 ≥16.07"	≥428 ≥16.85"	≥448 ≥17.64"
	A(mm) A(in)	≥934 ≥36.78"	≥974 ≥38.35"	≥1014 ≥39.93"
	A1(mm) A1(in)	≥408 ≥16.07"	≥428 ≥16.85"	≥448 ≥17.64"
	A(mm) A(in)	≥957 ≥37.68"	≥997 ≥39.26"	≥1037 ≥40.83"
	A1(mm) A1(in)	≥515 ≥20.28"	≥535 ≥21.07"	≥555 ≥21.85"
	A(mm) A(in)	≥1041 ≥40.99"	≥1081 ≥42.56"	≥1121 ≥44.14"
	A1(mm) A1(in)	≥515 ≥20.28"	≥535 ≥21.07"	≥555 ≥21.85"
 9712	B(mm) B(in)	≥350 ≥13.8"	≥500 ≥19.7"	≥650 ≥25.6"
 B(mm) B(in)	Verificare la dimensione minima del braccio impiegato Check the minimum size of the arm used Vérifier la dimension minimum du compas utilisé Averiguar la medida mínima del compas usado Проверка минимального размера для использования механизма 检查用臂的最小尺寸			



	A(mm) A(in)	$\geq 467$ $\geq 18.39"$	$\geq 487$ $\geq 19.18"$	$\geq 507$ $\geq 19.96"$
	A1(mm) A1(in)	$\geq 183$ $\geq 7.21"$		
	A(mm) A(in)	$\geq 618$ $\geq 24.33"$	$\geq 638$ $\geq 25.12"$	$\geq 658$ $\geq 26.97"$
	A1(mm) A1(in)	$\geq 183$ $\geq 7.21"$		
	A(mm) A(in)	$\geq 574$ $\geq 22.6"$	$\geq 594$ $\geq 23.39"$	$\geq 614$ $\geq 24.18"$
	A1(mm) A1(in)	$\geq 183$ $\geq 7.21"$		
	A(mm) A(in)	$\geq 725$ $\geq 28.55"$	$\geq 745$ $\geq 29.33"$	$\geq 765$ $\geq 30.19"$
	A1(mm) A1(in)	$\geq 183$ $\geq 7.21"$		

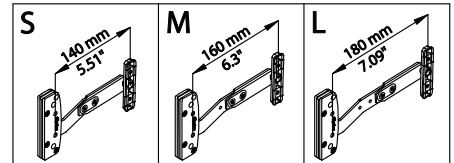
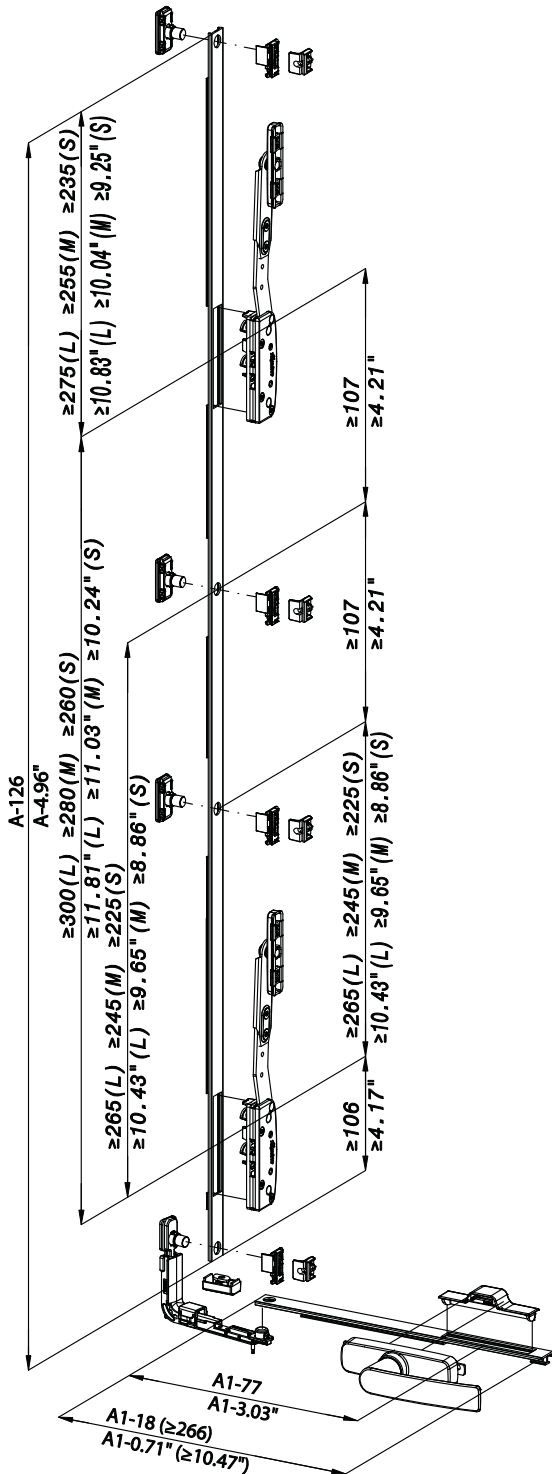
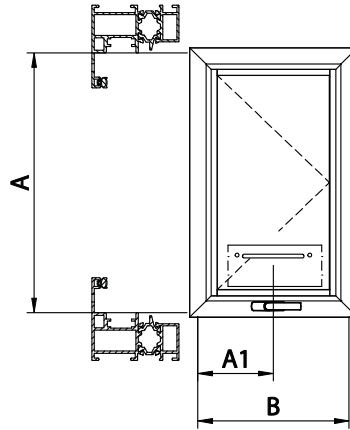
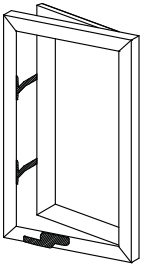
	B(mm) B(in)	$\geq 350$ $\geq 13.8"$	$\geq 500$ $\geq 19.7"$	$\geq 650$ $\geq 25.6"$
	B(mm) B(in)	Verificare la dimensione minima del braccio impiegato Check the minimum size of the arm used Vérifier la dimension minimum du compas utilisé Averiguar la medida mínima del compas usado Проверка минимального размера для использования механизма 檢查用臂的最小尺寸		





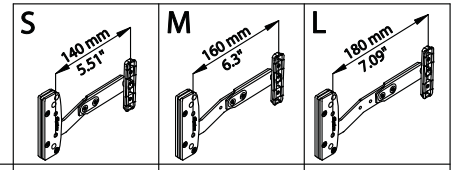
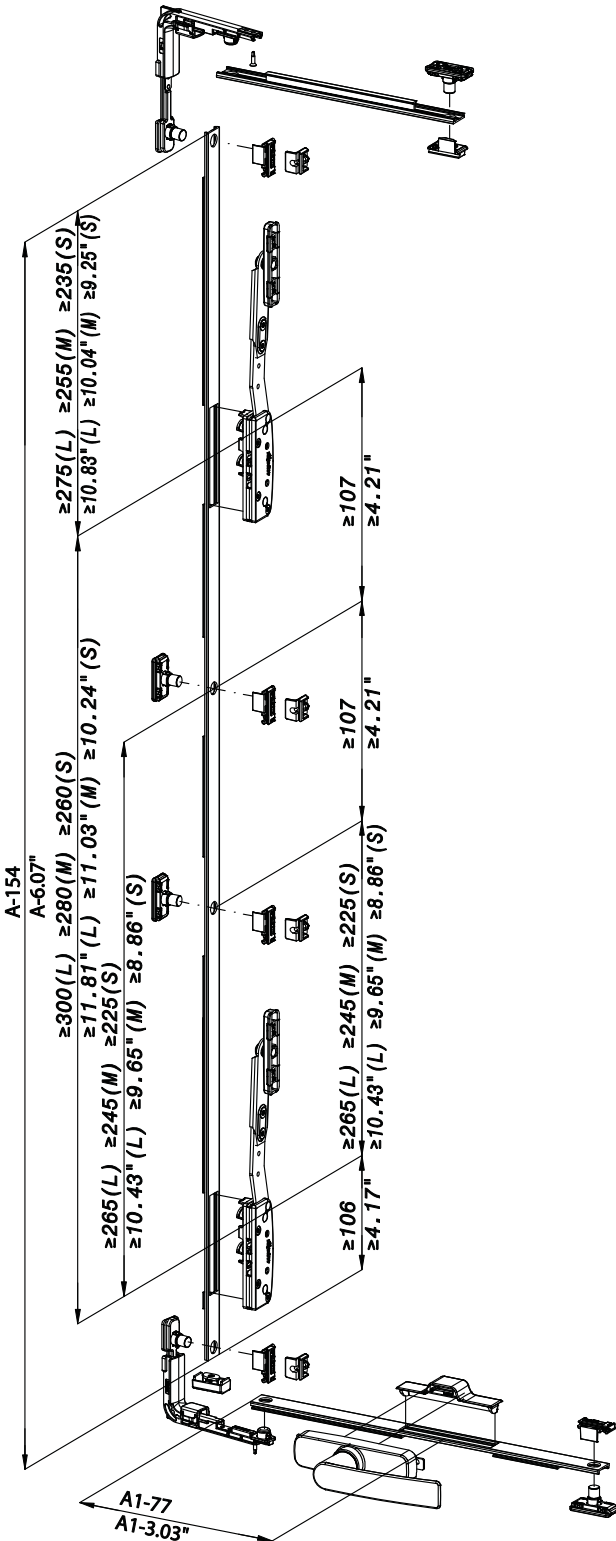
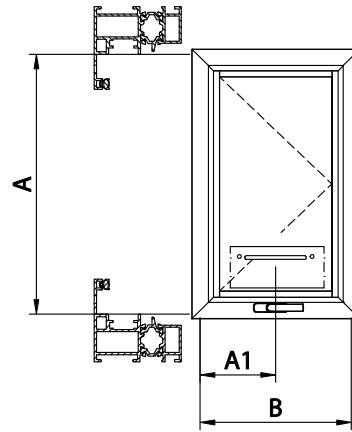
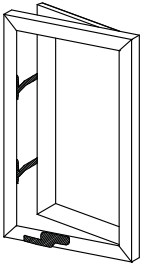
	<b>A(mm)</b> <b>A(in)</b>	$\geq 495$ $\geq 19.49"$	$\geq 515$ $\geq 20.28"$	$\geq 535$ $\geq 21.07"$
	<b>A1(mm)</b> <b>A1(in)</b>	$\geq 183$ $\geq 7.21"$		
	<b>A(mm)</b> <b>A(in)</b>	$\geq 618$ $\geq 24.33"$	$\geq 638$ $\geq 25.12"$	$\geq 658$ $\geq 25.91"$
	<b>A1(mm)</b> <b>A1(in)</b>	$\geq 183$ $\geq 7.21"$		
	<b>A(mm)</b> <b>A(in)</b>	$\geq 602$ $\geq 23.70"$	$\geq 622$ $\geq 24.49"$	$\geq 642$ $\geq 25.28"$
	<b>A1(mm)</b> <b>A1(in)</b>	$\geq 183$ $\geq 7.21"$		
	<b>A(mm)</b> <b>A(in)</b>	$\geq 725$ $\geq 28.55"$	$\geq 745$ $\geq 29.33"$	$\geq 765$ $\geq 30.12"$
	<b>A1(mm)</b> <b>A1(in)</b>	$\geq 183$ $\geq 7.21"$		

 <b>9712</b>	<b>B(mm)</b> <b>B(in)</b>	$\geq 350$ $\geq 13.8"$	$\geq 500$ $\geq 19.7"$	$\geq 650$ $\geq 25.6"$
 <b>B(mm)</b> <b>B(in)</b>	Verificare la dimensione minima del braccio impiegato Check the minimum size of the arm used Vérifier la dimension minimum du compas utilisé Averiguar la medida mínima del compas usado Проверка минимального размера для использования механизма 检查用臂的最小尺寸			



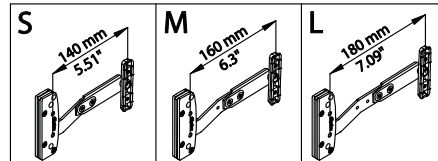
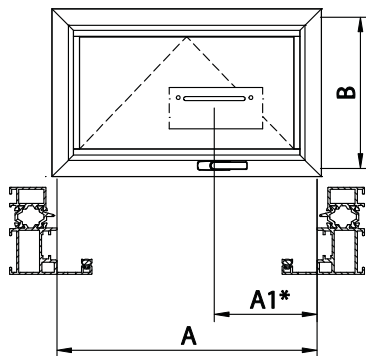
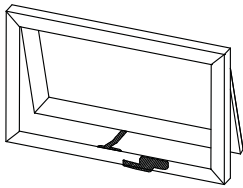
	A(mm) A(in)	$\geq 727$ $\geq 28.63$ "	$\geq 767$ $\geq 30.2$ "	$\geq 807$ $\geq 31.78$ "
	A1(mm) A1(in)	$\geq 183$ $\geq 7.21$ "		
	A(mm) A(in)	$\geq 799$ $\geq 31.46$ "	$\geq 839$ $\geq 33.04$ "	$\geq 879$ $\geq 34.61$ "
	A1(mm) A1(in)	$\geq 183$ $\geq 7.21$ "		
	A(mm) A(in)	$\geq 906$ $\geq 35.67$ "	$\geq 946$ $\geq 37.25$ "	$\geq 986$ $\geq 38.82$ "
	A1(mm) A1(in)	$\geq 183$ $\geq 7.21$ "		

	B(mm) B(in)	$\geq 350$ $\geq 13.8$ "	$\geq 500$ $\geq 19.7$ "	$\geq 650$ $\geq 25.6$ "
	B(mm) B(in)	Verificare la dimensione minima del braccio piegato Check the minimum size of the arm used Vérifier la dimension minimum du compas utilisé Averiguar la medida mínima del compas usado Проверка минимального размера для использования механизма 检查用臂的最小尺寸		



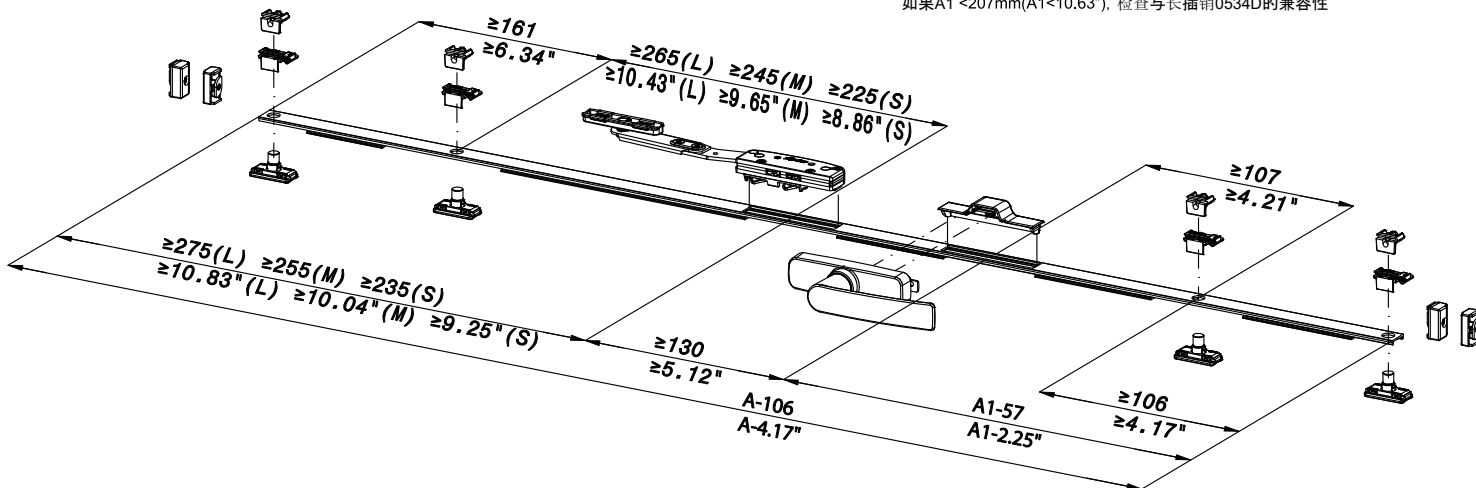
	A(mm) A(in)	$\geq 755$ $\geq 29.73$ "	$\geq 795$ $\geq 31.3$ "	$\geq 835$ $\geq 32.88$ "
	A1(mm) A1(in)	$\geq 183$ $\geq 7.21$ "		
	A(mm) A(in)	$\geq 827$ $\geq 32.56$ "	$\geq 867$ $\geq 34.14$ "	$\geq 907$ $\geq 35.71$ "
	A1(mm) A1(in)	$\geq 183$ $\geq 7.21$ "		
	A(mm) A(in)	$\geq 934$ $\geq 36.78$ "	$\geq 974$ $\geq 38.35$ "	$\geq 1014$ $\geq 39.93$ "
	A1(mm) A1(in)	$\geq 183$ $\geq 7.21$ "		

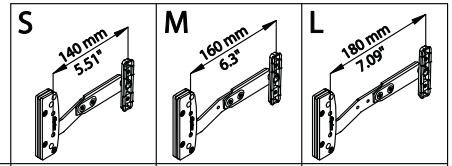
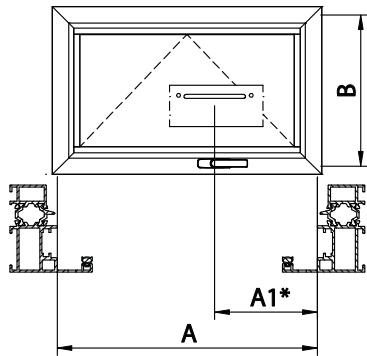
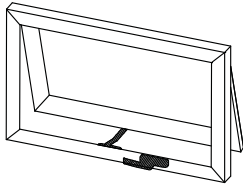
<p>9712</p>	B(mm) B(in)	$\geq 350$ $\geq 13.8$ "	$\geq 500$ $\geq 19.7$ "	$\geq 650$ $\geq 25.6$ "
	B(mm) B(in)	Verificare la dimensione minima del braccio impiegato Check the minimum size of the arm used Vérifier la dimension minimum du bras utilisé Averiguar la medida mínima del compas usado Проверка минимального размера для использования механизма 检查用臂的最小尺寸		



	A(mm) A(in)	≥577 ≥22.72"	≥597 ≥23.5"	≥617 ≥24.29"
	A1(mm) A1(in)	≥163 ≥6.42"		
	A(mm) A(in)	≥628 ≥24.73"	≥748 ≥29.45"	≥768 ≥30.24"
	A1(mm) A1(in)	≥163 ≥6.42"		
	A(mm) A(in)	≥684 ≥26.93"	≥704 ≥27.72"	≥724 ≥28.51"
	A1(mm) A1(in)	≥270 ≥10.63"		
	A(mm) A(in)	≥835 ≥32.88"	≥855 ≥33.67"	≥875 ≥34.45"
	A1(mm) A1(in)	≥270 ≥10.63"		
	B(mm) B(in)	≥350 ≥13.8"	≥500 ≥19.7"	≥650 ≥25.6"
	B(mm) B(in)	Verificare la dimensione minima del braccio piegato Check the minimum size of the arm used Vérifier la dimension minimum du compas utilisé Averiguar la medida mínima del compas usado Проверка минимального размера для использования механизма 检查用臂的最小尺寸		

\*: Se A1 < 207mm (A1 < 10.63") verificare compatibilità con cremone 0534D  
 If A1 < 207mm (A1 < 10.63") check compatibility with 0534D cremone bolt  
 Si A1 < 207mm (A1 < 10.63") vérifier la compatibilité avec la crémonne 0534D  
 Se A1 < 207mm (A1 < 10.63") Averiguar compatibilidad con cremona 0534D  
 Если A1 < 207mm (A1 < 10.63") проверить совместимость с ручкой арт. 0534D  
 如果 A1 < 207mm (A1 < 10.63"), 检查与长插销 0534D 的兼容性

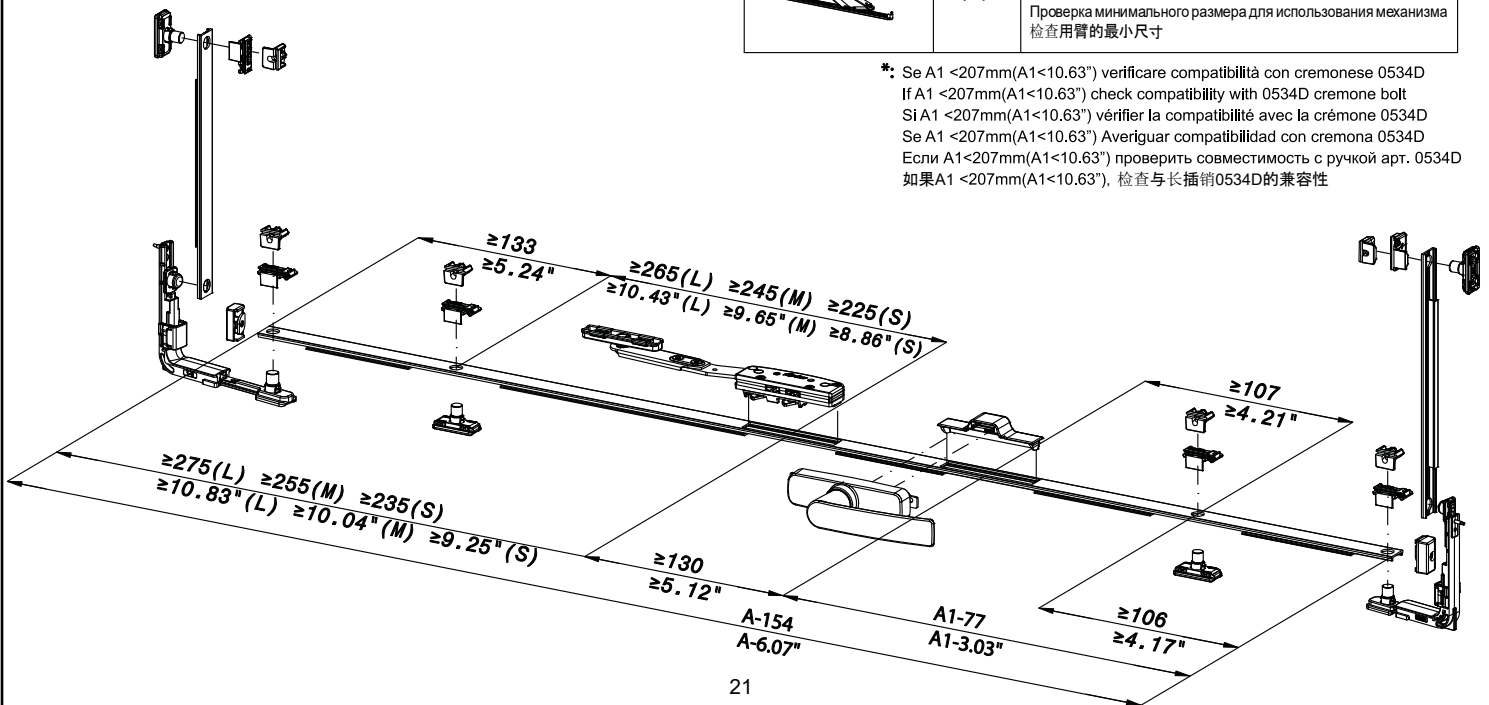


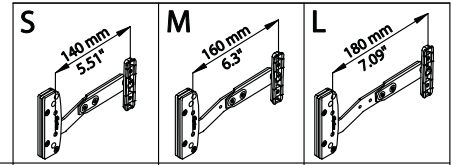
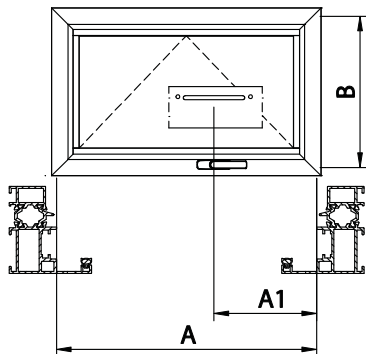
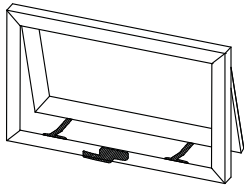


	A(mm) A(in)	≥625 ≥24.61"	≥645 ≥25.4"	≥665 ≥26.18"
	A1(mm) A1(in)	≥183 ≥7.21"		
	A(mm) A(in)	≥748 ≥29.45"	≥768 ≥30.24"	≥788 ≥31.03"
	A1(mm) A1(in)	≥183 ≥7.21"		
	A(mm) A(in)	≥732 ≥28.82"	≥752 ≥29.61"	≥772 ≥30.4"
	A1(mm) A1(in)	≥290 ≥11.42"		
	A(mm) A(in)	≥855 ≥33.67"	≥875 ≥34.45"	≥895 ≥35.24"
	A1(mm) A1(in)	≥290 ≥11.42"		

 9712	B(mm) B(in)	≥350 ≥13.8"	≥500 ≥19.7"	≥650 ≥25.6"
	B(mm) B(in)	Verificare la dimensione minima del braccio impiegato Check the minimum size of the arm used Vérifier la dimension minimum du compas utilisé Averiguar la medida mínima del compas usado Проверка минимального размера для использования механизма 检查用臂的最小尺寸		

\*: Se A1 <207mm(A1<10.63") verificare compatibilità con cremone 0534D  
 If A1 <207mm(A1<10.63") check compatibility with 0534D cremone bolt  
 Si A1 <207mm(A1<10.63") vérifier la compatibilité avec la crémonne 0534D  
 Se A1 <207mm(A1<10.63") Averiguar compatibilidad con cremona 0534D  
 Если A1 <207mm(A1<10.63") проверить совместимость с ручкой арт. 0534D  
 如果A1 <207mm(A1<10.63"), 检查与长插销0534D的兼容性

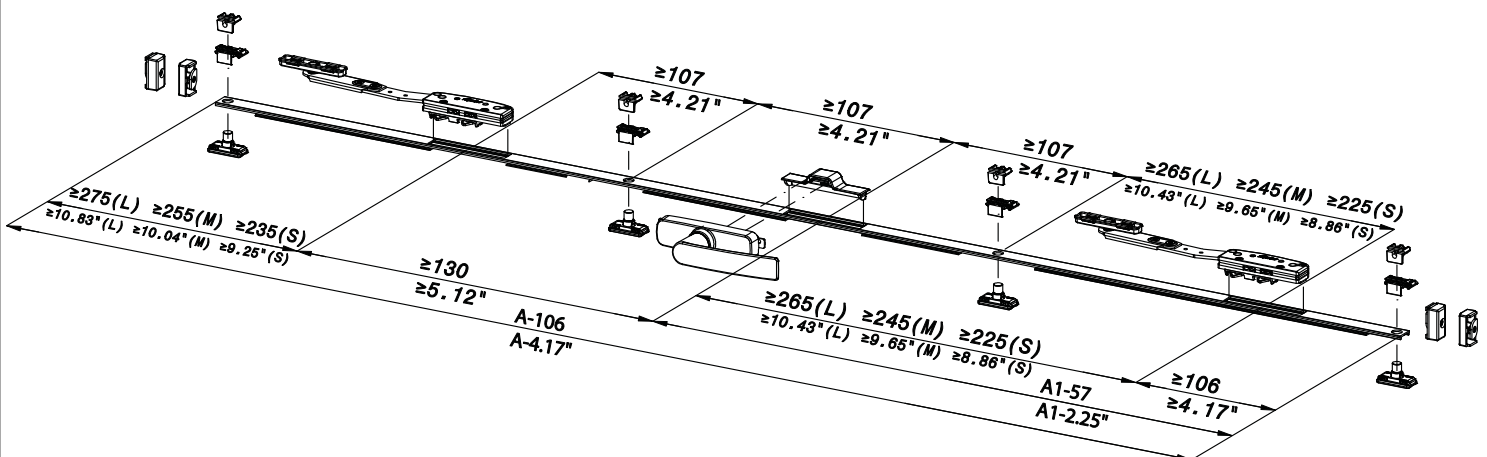


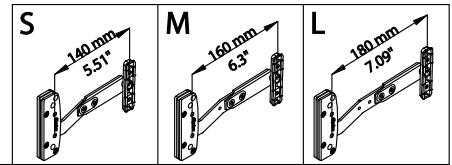
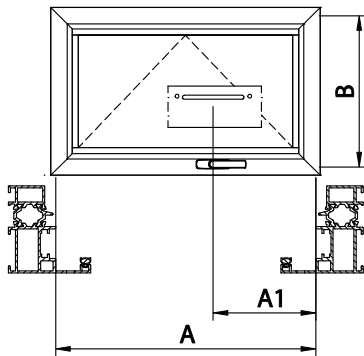
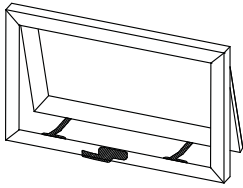


	A(mm) A(in)	≥802 ≥31.58"	≥842 ≥33.15"	≥882 ≥34.73"
	A1(mm) A1(in)	≥388 ≥15.26"	≥408 ≥16.07"	≥428 ≥16.85"
	A(mm) A(in)	≥886 ≥34.89"	≥926 ≥36.46"	≥966 ≥38.04"
	A1(mm) A1(in)	≥388 ≥15.26"	≥408 ≥16.07"	≥428 ≥16.85"
	A(mm) A(in)	≥909 ≥35.79"	≥949 ≥37.37"	≥989 ≥38.94"
	A1(mm) A1(in)	≥495 ≥19.49"	≥515 ≥20.28"	≥535 ≥21.07"
	A(mm) A(in)	≥993 ≥39.1"	≥1033 ≥40.67"	≥1073 ≥42.25"
	A1(mm) A1(in)	≥495 ≥19.49"	≥515 ≥20.28"	≥535 ≥21.07"

	B(mm) B(in)	≥350 ≥13.8"	≥500 ≥19.7"	≥650 ≥25.6"
--	----------------	----------------	----------------	----------------

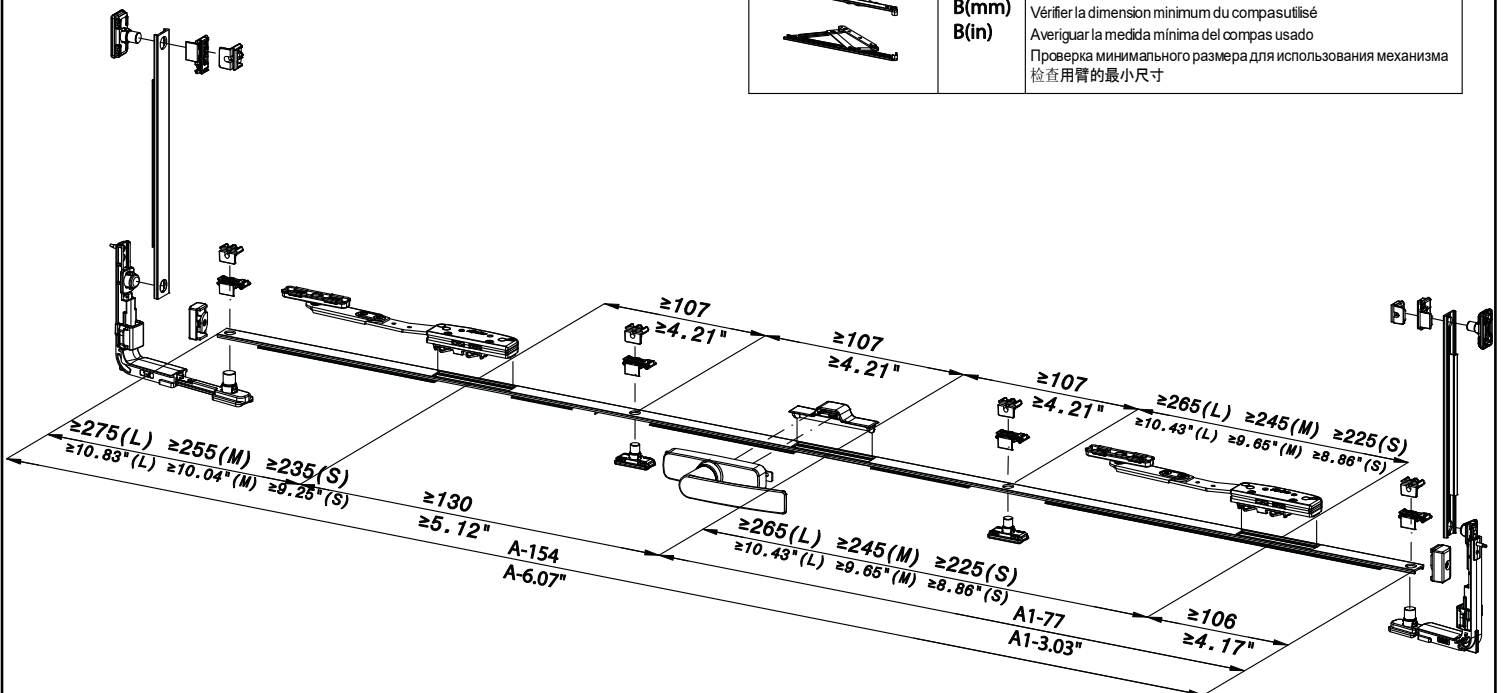
	B(mm) B(in)	Verificare la dimensione minima del braccio piegato Check the minimum size of the arm used Vérifier la dimension minimum du compas utilisé Averiguar la medida mínima del compas usado Проверка минимального размера для использования механизма 检查用臂的最小尺寸		
--	----------------	---	--	--

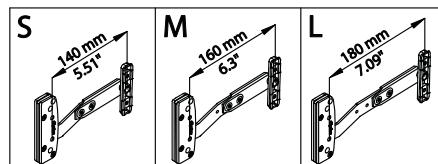
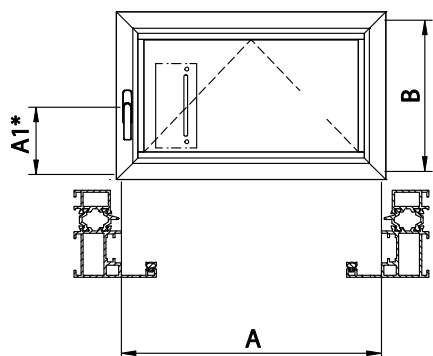
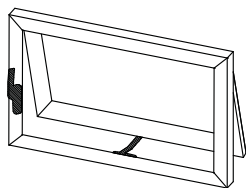




		S	M	L
	A(mm) A(in)	≥850 ≥33.45"	≥890 ≥35.04"	≥930 ≥36.15"
	A1(mm) A1(in)	≥408 ≥16.07"	≥428 ≥16.85"	≥448 ≥17.64"
	A(mm) A(in)	≥934 ≥36.78"	≥974 ≥38.35"	≥1014 ≥39.93"
	A1(mm) A1(in)	≥408 ≥16.07"	≥428 ≥16.85"	≥448 ≥17.64"
	A(mm) A(in)	≥957 ≥37.68"	≥997 ≥39.26"	≥1037 ≥40.83"
	A1(mm) A1(in)	≥515 ≥20.28"	≥535 ≥21.07"	≥555 ≥21.85"
	A(mm) A(in)	≥1041 ≥40.99"	≥1081 ≥42.56"	≥1121 ≥44.14"
	A1(mm) A1(in)	≥515 ≥20.28"	≥535 ≥21.07"	≥555 ≥21.85"

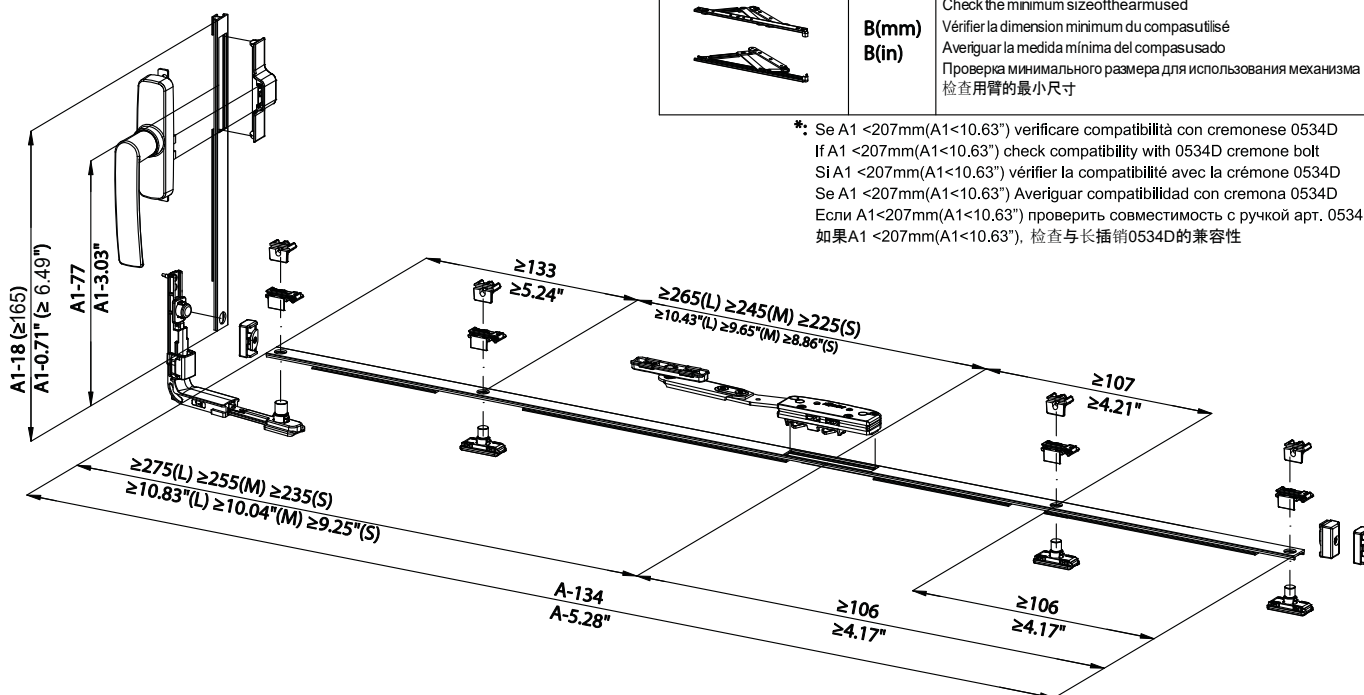
	<b>9712</b>	B(mm) B(in)	≥350 ≥13.8"	≥500 ≥19.7"	≥650 ≥25.6"
		B(mm) B(in)	Verificare la dimensione minima del braccio impiegato Check the minimum size of the arm used Vérifier la dimension minimum du bras utilisé Averiguar la medida mínima del compas usado Проверка минимального размера для использования механизма 检查用臂的最小尺寸		





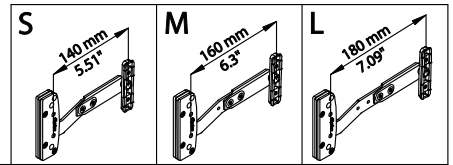
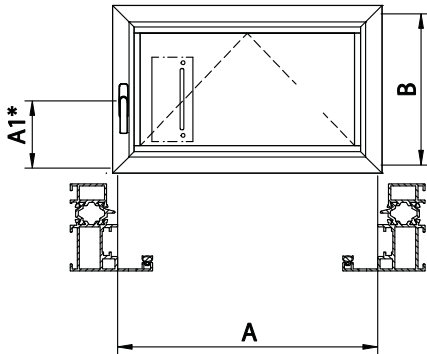
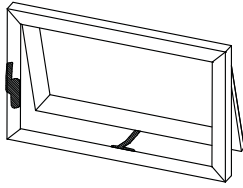
	A(mm) A(in)	≥475 ≥18.70"	≥495 ≥19.49"	≥515 ≥20.28"
	A1(mm) A1(in)	≥183 ≥7.21"		
	A(mm) A(in)	≥598 ≥23.55"	≥618 ≥24.33"	≥638 ≥25.12"
	A1(mm) A1(in)	≥183 ≥7.21"		
	A(mm) A(in)	≥582 ≥22.92"	≥602 ≥23.70"	≥622 ≥24.49"
	A1(mm) A1(in)	≥183 ≥7.21"		
	A(mm) A(in)	≥705 ≥27.76"	≥725 ≥28.55"	≥745 ≥29.33"
	A1(mm) A1(in)	≥183 ≥7.21"		

	<b>B(mm)</b> <b>B(in)</b>	≥350 ≥13.8"	≥500 ≥19.7"	≥650 ≥25.6"
	<b>B(mm)</b> <b>B(in)</b>	Verificare la dimensione minima del braccio impiegato Check the minimum size of the arm used Vérifier la dimension minimum du compas utilisé Averiguar la medida mínima del compas usado Проверка минимального размера для использования механизма 检查用臂的最小尺寸		



\* Se A1 < 207mm (A1 < 10.63") verificare compatibilità con cremonese 0534D  
 If A1 < 207mm (A1 < 10.63") check compatibility with 0534D cremone bolt  
 Si A1 < 207mm (A1 < 10.63") vérifier la compatibilité avec la crémonne 0534D  
 Se A1 < 207mm (A1 < 10.63") Averiguar compatibilidad con cremona 0534D  
 Если A1 < 207mm (A1 < 10.63") проверить совместимость с ручкой арт. 0534D  
 如果 A1 < 207mm (A1 < 10.63"), 检查与长插销 0534D 的兼容性

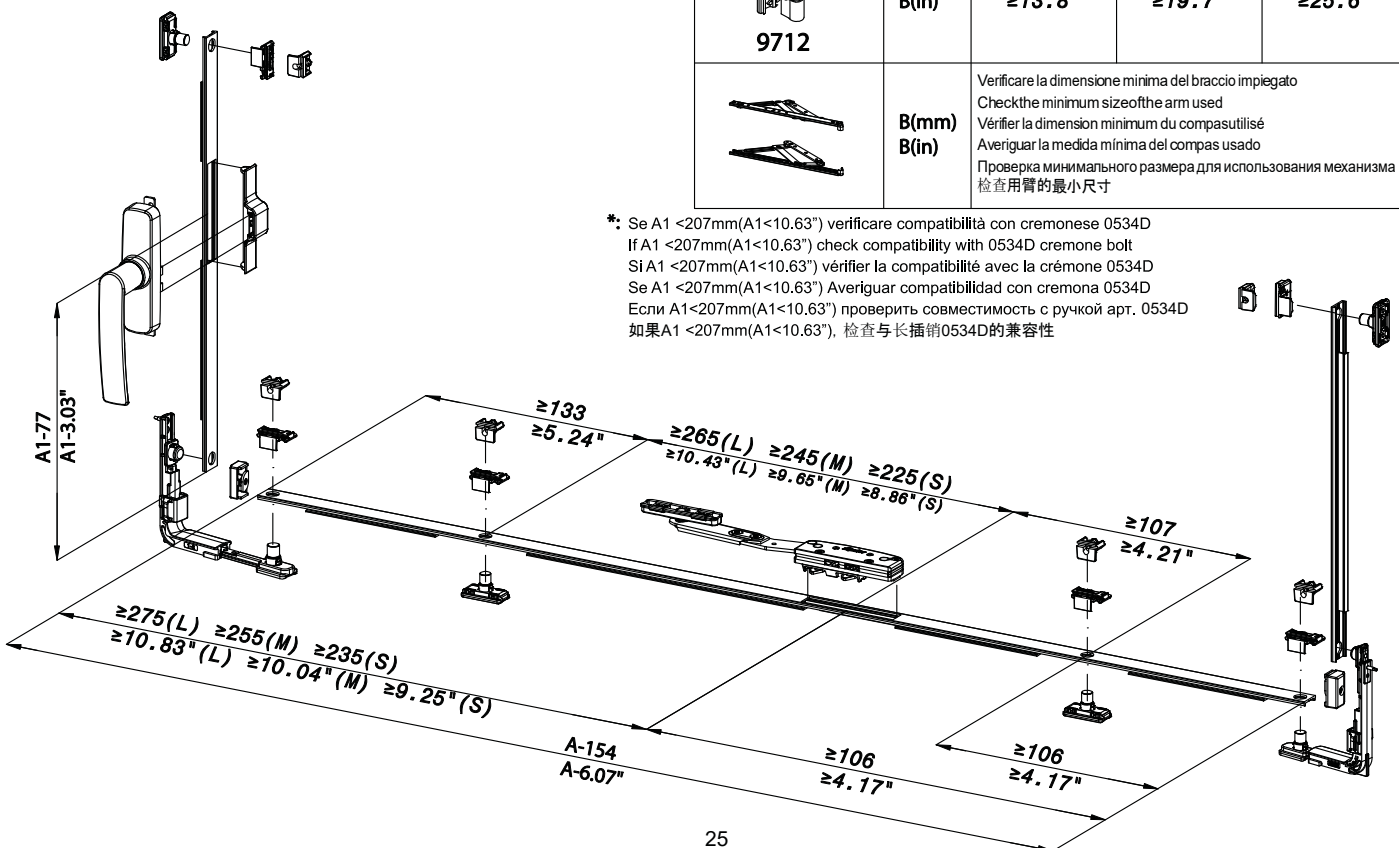


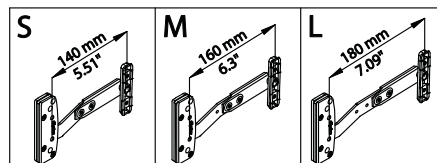
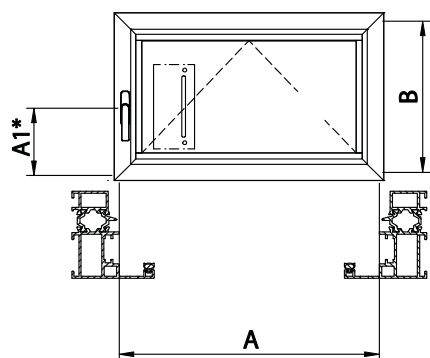
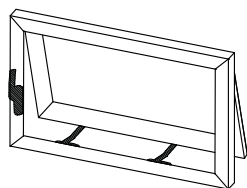


	A(mm) A(in)	≥495 ≥19.49"	≥515 ≥20.28"	≥535 ≥21.07"
	A1(mm) A1(in)	≥183 ≥7.21"		
	A(mm) A(in)	≥618 ≥24.33"	≥638 ≥25.12"	≥658 ≥25.91"
	A1(mm) A1(in)	≥183 ≥7.21"		
	A(mm) A(in)	≥602 ≥23.70"	≥622 ≥24.49"	≥642 ≥25.28"
	A1(mm) A1(in)	≥183 ≥7.21"		
	A(mm) A(in)	≥725 ≥28.55"	≥745 ≥29.33"	≥765 ≥30.12"
	A1(mm) A1(in)	≥183 ≥7.21"		

	<b>B(mm)</b> <b>B(in)</b>	≥350 ≥13.8"	≥500 ≥19.7"	≥650 ≥25.6"
	<b>B(mm)</b> <b>B(in)</b>	Verificare la dimensione minima del braccio impiegato Check the minimum size of the arm used Vérifier la dimension minimum du compas utilisé Averiguar la medida mínima del compas usado Проверка минимального размера для использования механизма 检查用臂的最小尺寸		

\*: Se A1 <207mm(A1<10.63") verificare compatibilità con cremonese 0534D  
 If A1 <207mm(A1<10.63") check compatibility with 0534D cremone bolt  
 Si A1 <207mm(A1<10.63") vérifier la compatibilité avec la crémonne 0534D  
 Se A1 <207mm(A1<10.63") Averiguar compatibilidad con cremona 0534D  
 Если A1 <207mm(A1<10.63") проверить совместимость с ручкой арт. 0534D  
 如果A1 <207mm(A1<10.63"), 检查与长插销0534D的兼容性

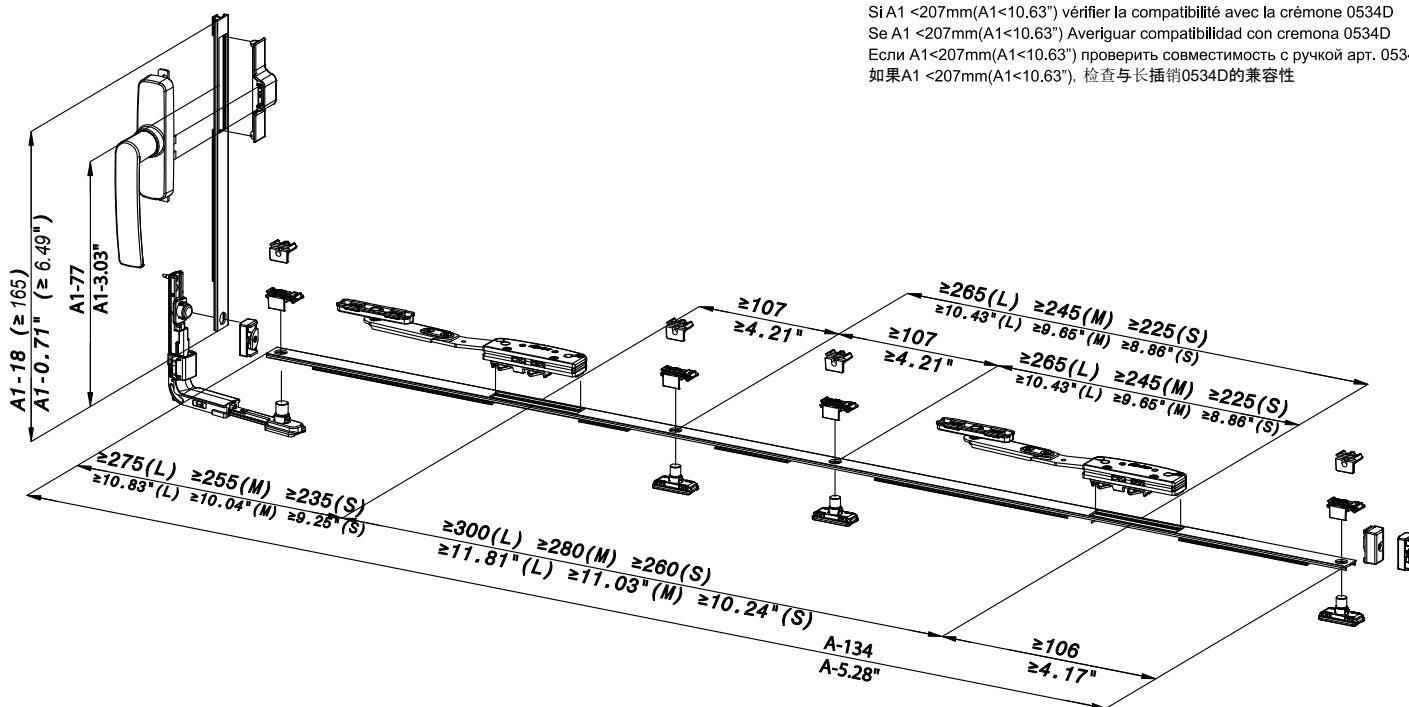


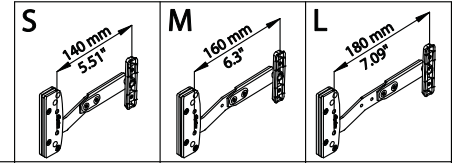
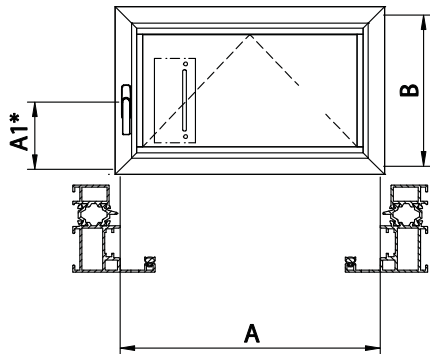
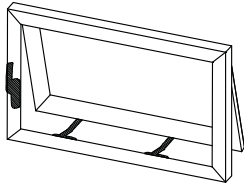


	A(mm) A(in)	≥735 ≥28.94"	≥775 ≥30.52"	≥815 ≥32.09"
	A1(mm) A1(in)	≥183 ≥7.21"		
	A(mm) A(in)	≥807 ≥31.78"	≥847 ≥33.65"	≥887 ≥34.93"
	A1(mm) A1(in)	≥183 ≥7.21"		
	A(mm) A(in)	≥914 ≥35.99"	≥954 ≥37.56"	≥994 ≥39.14"
	A1(mm) A1(in)	≥183 ≥7.21"		

	B(mm) B(in)	≥350 ≥13.8"	≥500 ≥19.7"	≥650 ≥25.6"
	B(mm) B(in)	Verificare la dimensione minima del braccio impiegato Check the minimum size of the arm used Vérifier la dimension minimum du compas utilisé Averiguar la medida mínima del compas usado Проверка минимального размера для использования механизма 检查用臂的最小尺寸		

\*: Se A1 < 207mm (A1 < 10.63") verificare compatibilità con cremone 0534D  
 If A1 < 207mm (A1 < 10.63") check compatibility with 0534D cremone bolt  
 Si A1 < 207mm (A1 < 10.63") vérifier la compatibilité avec la crémonne 0534D  
 Se A1 < 207mm (A1 < 10.63") Averiguar compatibilidad con cremona 0534D  
 Если A1 < 207mm (A1 < 10.63") проверить совместимость с ручкой арт. 0534D  
 如果 A1 < 207mm (A1 < 10.63"), 检查与长插销 0534D 的兼容性





	A(mm) A(in)	≥755 ≥29.73"	≥795 ≥31.3"	≥835 ≥32.88"
	A1(mm) A1(in)	≥183 ≥7.21"		
	A(mm) A(in)	≥827 ≥32.56"	≥867 ≥34.14"	≥907 ≥35.71"
	A1(mm) A1(in)	≥183 ≥7.21"		
	A(mm) A(in)	≥934 ≥36.78"	≥974 ≥38.35"	≥1014 ≥39.93"
	A1(mm) A1(in)	≥183 ≥7.21"		

	<b>9712</b>	B(mm) B(in)	≥350 ≥13.8"	≥500 ≥19.7"	≥650 ≥25.6"
		B(mm) B(in)	Verificare la dimensione minima del braccio impiegato Check the minimum size of the arm used Vérifier la dimension minimum du compas utilisé Averiguar la medida mínima del compas usado Проверка минимального размера для использования механизма 检查用臂的最小尺寸		

\*: Se A1 < 207mm (A1 < 10.63") verificare compatibilità con cremone 0534D  
 If A1 < 207mm (A1 < 10.63") check compatibility with 0534D cremone bolt  
 Si A1 < 207mm (A1 < 10.63") vérifier la compatibilité avec la crémonne 0534D  
 Se A1 < 207mm (A1 < 10.63") Averiguar compatibilidad con cremona 0534D  
 Если A1 < 207mm (A1 < 10.63") проверить совместимость с ручкой арт. 0534D  
 如果 A1 < 207mm (A1 < 10.63"), 检查与长插销 0534D 的兼容性

